

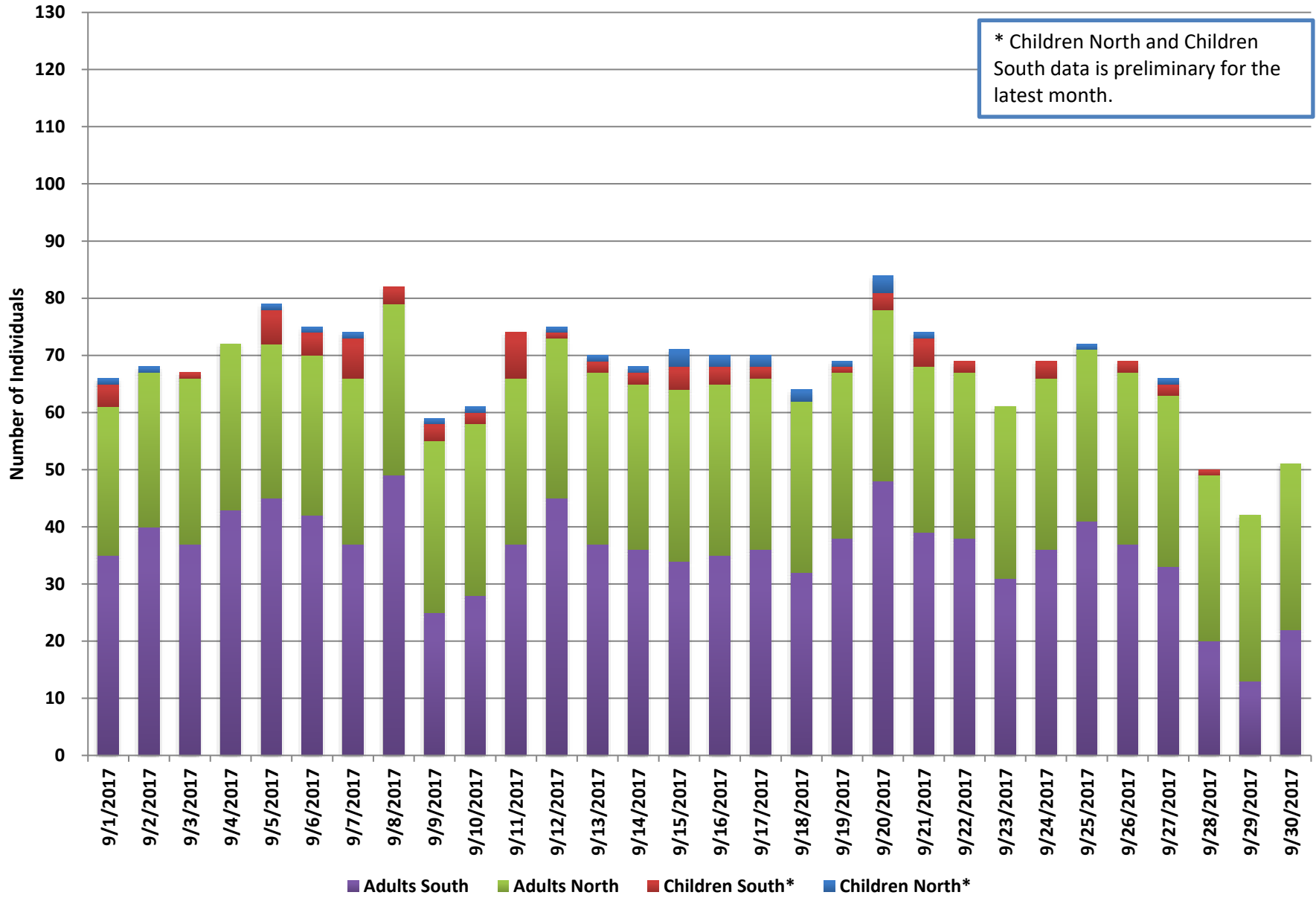
# **Behavioral Health Chart Pack**

---

**October 2017**

## Individuals Waiting in Emergency Rooms for Behavioral Health Services

\* Children North and Children South data is preliminary for the latest month.



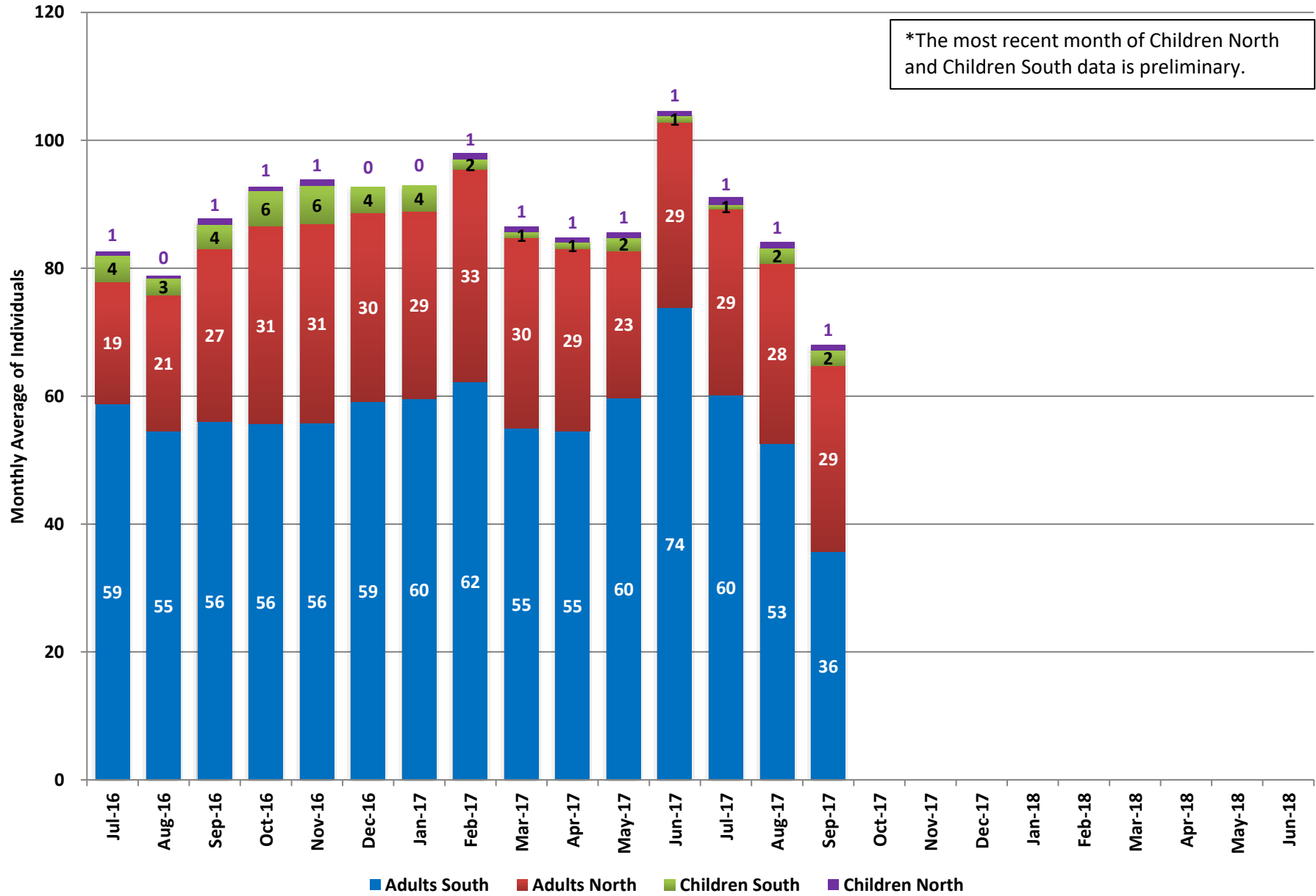
## Individuals Waiting in Emergency Rooms for Behavioral Health Services

	Adults South	Children South*	Adults North	Children North*	Total
9/1/2017	35	4	26	1	66
9/2/2017	40	0	27	1	68
9/3/2017	37	1	29	0	67
9/4/2017	43	0	29	0	72
9/5/2017	45	6	27	1	79
9/6/2017	42	4	28	1	75
9/7/2017	37	7	29	1	74
9/8/2017	49	3	30	0	82
9/9/2017	25	3	30	1	59
9/10/2017	28	2	30	1	61
9/11/2017	37	8	29	0	74
9/12/2017	45	1	28	1	75
9/13/2017	37	2	30	1	70
9/14/2017	36	2	29	1	68
9/15/2017	34	4	30	3	71
9/16/2017	35	3	30	2	70
9/17/2017	36	2	30	2	70
9/18/2017	32	0	30	2	64
9/19/2017	38	1	29	1	69
9/20/2017	48	3	30	3	84
9/21/2017	39	5	29	1	74
9/22/2017	38	2	29	0	69
9/23/2017	31	0	30	0	61
9/24/2017	36	3	30	0	69
9/25/2017	41	0	30	1	72
9/26/2017	37	2	30	0	69
9/27/2017	33	2	30	1	66
9/28/2017	20	1	29	0	50
9/29/2017	13	0	29	0	42
9/30/2017	22	0	29	0	51

\* Children North and Children South data is Preliminary and will be updated as soon as possible.

## Individuals Waiting in Emergency Rooms for Behavioral Health Services - Monthly Average

\*The most recent month of Children North and Children South data is preliminary.



## Individuals Waiting in Emergency Rooms for Behavioral Health Services

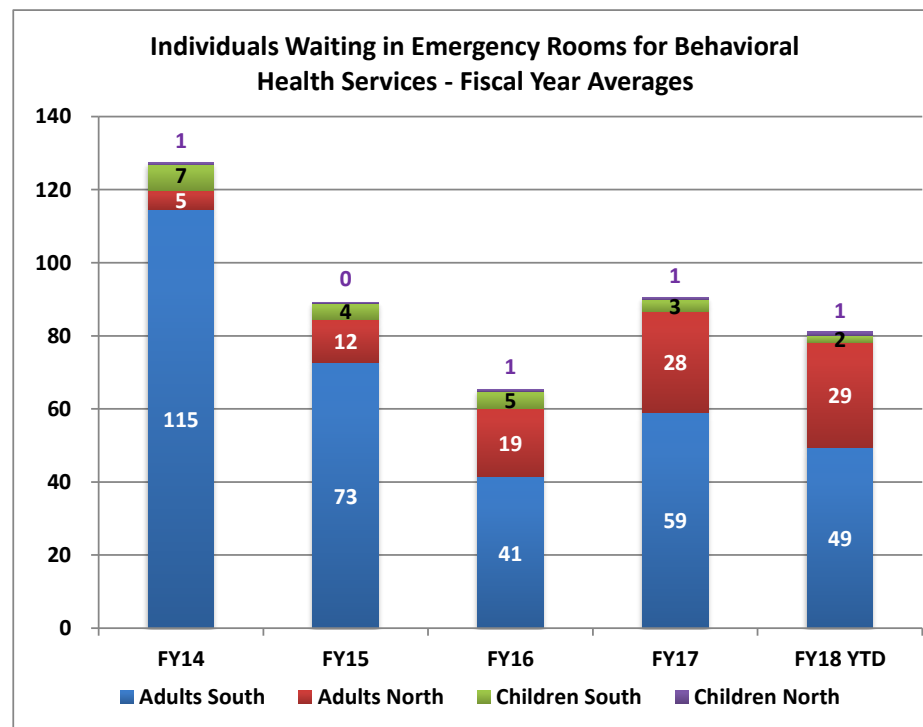
### Monthly Average

	Adults South	Adults North	Children South	Children North	Total
Jun-16	54	15	3	1	73
Jul-16	59	19	4	1	83
Aug-16	56	21	4	0	80
Sep-16	56	27	5	1	89
Oct-16	56	31	6	1	93
Nov-16	58	30	5	0	94
Dec-16	59	30	4	0	93
Jan-17	60	29	4	0	94
Feb-17	62	33	2	1	98
Mar-17	55	30	1	1	87
Apr-17	55	29	1	1	85
May-17	60	23	2	1	85
Jun-17	74	29	1	1	105
Jul-17	60	29	1	1	91
Aug-17	53	28	2	1	84
Sep-17	36	29	2	1	68
Oct-17					
Nov-17					
Dec-17					
Jan-18					
Feb-18					
Mar-18					
Apr-18					
May-18					
Jun-18					

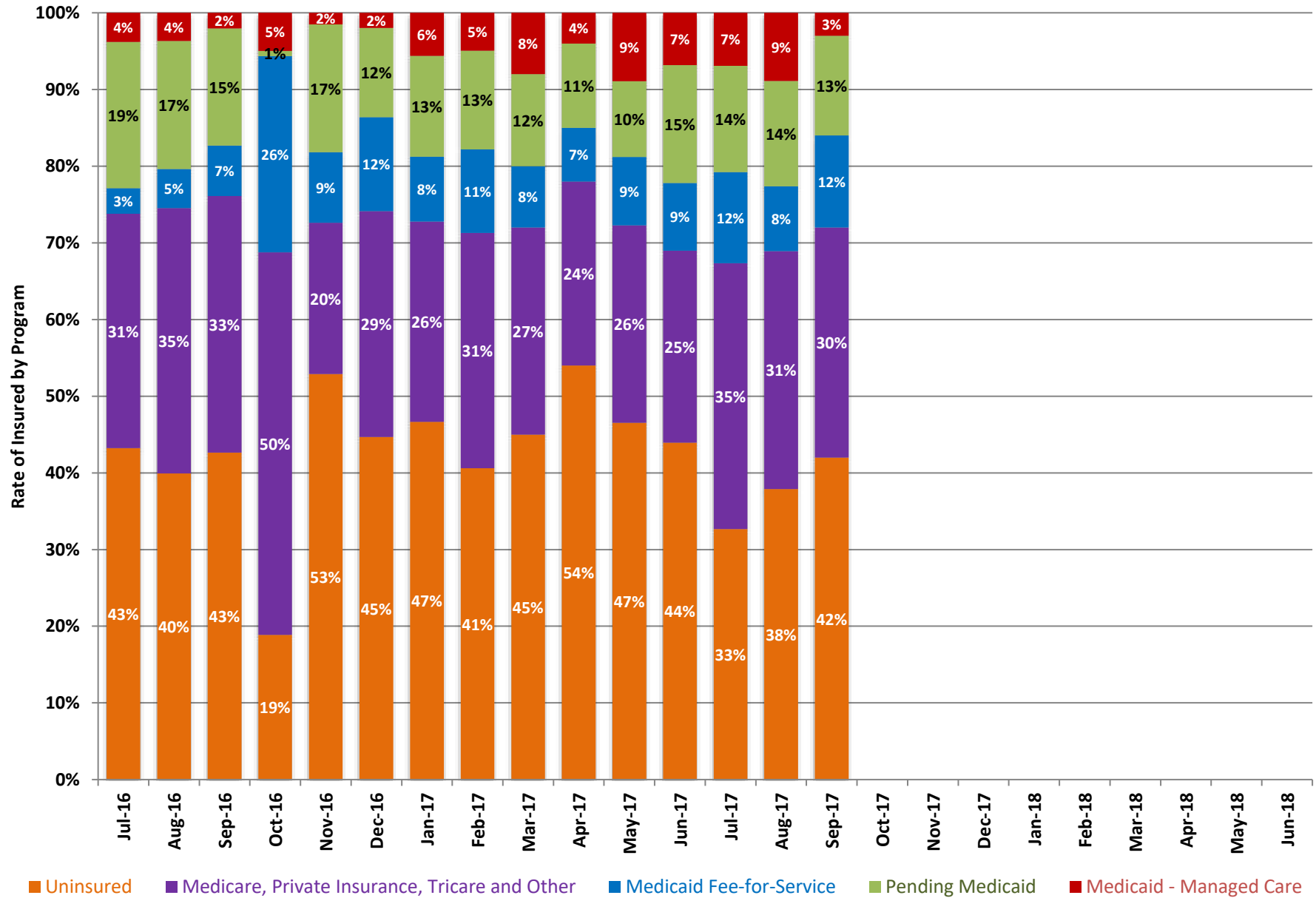
\* Children North and Children South data is preliminary, data in the North is missing for two hospitals.

### Fiscal Year Averages

Fiscal Year	Adults South	Adults North	Children South	Children North	Total	Percent Change
FY14	115	5	7	1	119	
FY15	73	12	4	0	89	-25%
FY16	41	19	5	1	64	-28%
FY17	59	28	3	1	91	41%
FY18 YTD	49	29	2	1	81	-10%



## Insurance Status of Adults Waiting in Emergency Rooms for Behavioral Health Services



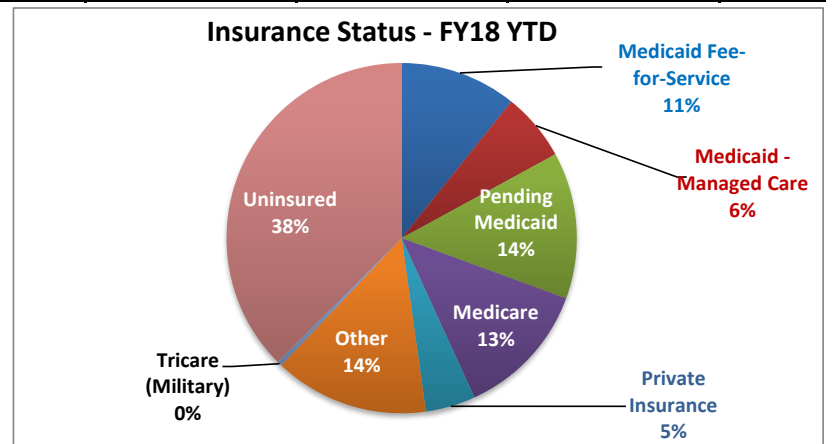
## Insurance Status of Adults Waiting in Emergency Rooms for Behavioral Health Services (Monthly Average)

	Medicaid Fee-for-Service		Medicaid - Managed Care		Pending Medicaid		Medicare		Private Insurance		Tricare (Military)		Other		Uninsured	
	Number	Percent	Number	Percent	Number	Percent	Number	Percent	Number	Percent	Number	Percent	Number	Percent	Number	Percent
Jul-16	2	3%	3	4%	13	19%	5	7%	1	2%	0	0%	15	22%	31	43%
Aug-16	3	5%	3	4%	11	17%	7	10%	1	2%	0	0%	16	23%	27	40%
Sep-16	5	7%	2	2%	11	15%	5	7%	1	1%	0	0%	18	25%	32	43%
Oct-16	7	26%	1	5%	0	1%	6	20%	0	0%	0	0%	8	29%	5	19%
Nov-16	7	9%	1	2%	13	17%	9	11%	2	3%	0	0%	5	6%	42	53%
Dec-16	11	12%	2	2%	10	12%	12	13%	5	6%	1	1%	9	10%	40	45%
Jan-17	4	8%	3	6%	7	13%	6	11%	2	4%	0	0%	6	11%	24	47%
Feb-17	11	11%	5	5%	13	13%	12	12%	6	6%	1	1%	12	12%	41	41%
Mar-17	7	8%	6	8%	10	12%	12	14%	4	4%	0	0%	8	9%	38	45%
Apr-17	6	7%	3	4%	9	11%	10	12%	3	4%	1	1%	6	7%	44	54%
May-17	7	9%	8	9%	8	10%	10	13%	3	4%	1	1%	6	8%	38	47%
Jun-17	8	9%	7	7%	15	15%	11	11%	3	3%	1	1%	10	10%	42	44%
Jul-17	9	12%	5	7%	11	14%	9	12%	4	5%	1	1%	13	17%	25	33%
Aug-17	7	8%	7	9%	12	14%	13	15%	4	5%	0	0%	9	11%	32	38%
Sep-17	7	12%	2	3%	8	13%	7	11%	3	4%	0	0%	9	15%	26	42%
Oct-17																
Nov-17																
Dec-17																
Jan-18																
Feb-18																
Mar-18																
Apr-18																
May-18																
Jun-18																

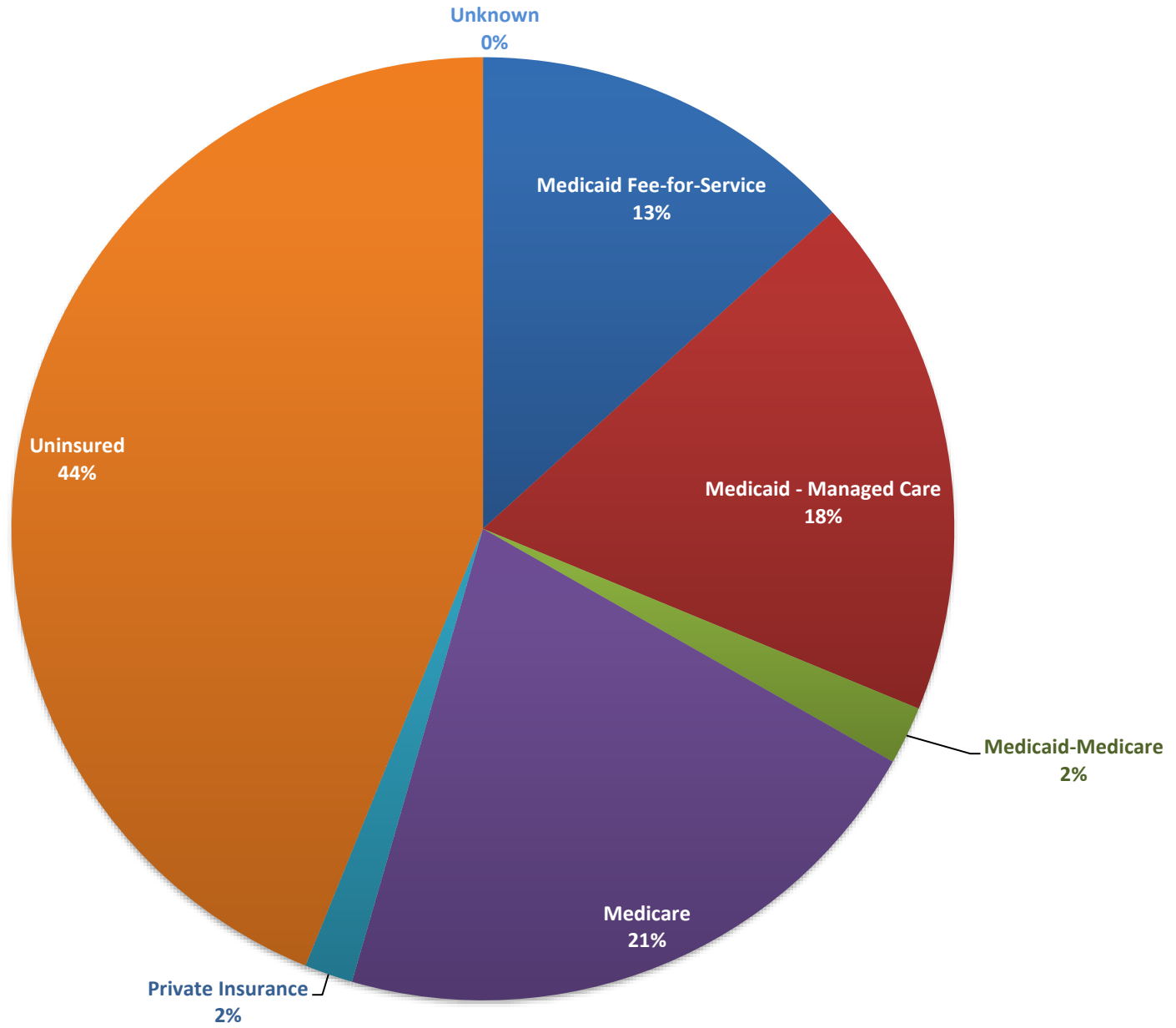
Note: This is the average for the month of the daily counts of individuals in each category.

### Fiscal Year Averages

Insurance Status	FY15	FY16	FY17	FY18 YTD
Medicaid Fee-for-Service	24%	5%	10%	11%
Medicaid - Managed Care	11%	4%	5%	6%
Pending Medicaid	12%	18%	13%	14%
Medicare	7%	8%	12%	13%
Private Insurance	2%	2%	3%	5%
Other	8%	21%	14%	14%
Tricare (Military)	0%	0%	0%	0%
Uninsured	37%	42%	43%	38%



# Insurance Status of Inpatient Clients - Statewide, FY18 YTD





## Insurance Status of Adult Inpatient Clients (Monthly Average)

### DINI-TOWNSEND (NORTH)

	Medicaid Fee-for-Service	Medicaid - Managed Care	Medicaid-Medicare	Medicare	Private Insurance	Uninsured	Unknown
Jul-16	30%	17%	5%	14%	17%	17%	1%
Aug-16	32%	22%	3%	20%	5%	18%	0%
Sep-16	24%	20%	7%	24%	5%	20%	0%
Oct-16	31%	13%	6%	31%	5%	14%	0%
Nov-16	23%	7%	13%	27%	8%	23%	0%
Dec-16	23%	8%	14%	21%	4%	30%	0%
Jan-17	34%	11%	13%	14%	5%	22%	0%
Feb-17	34%	21%	13%	15%	1%	16%	0%
Mar-17	26%	19%	11%	21%	7%	16%	0%
Apr-17	26%	11%	18%	14%	12%	19%	0%
May-17	27%	13%	14%	15%	18%	13%	0%
Jun-17	38%	15%	9%	18%	6%	14%	0%
Jul-17	32%	8%	9%	26%	5%	19%	0%
Aug-17	38%	4%	5%	28%	3%	22%	0%
Sep-17	27%	6%	17%	31%	3%	16%	0%
Oct-17							
Nov-17							
Dec-17							
Jan-18							
Feb-18							
Mar-18							
Apr-18							
May-18							
Jun-18							

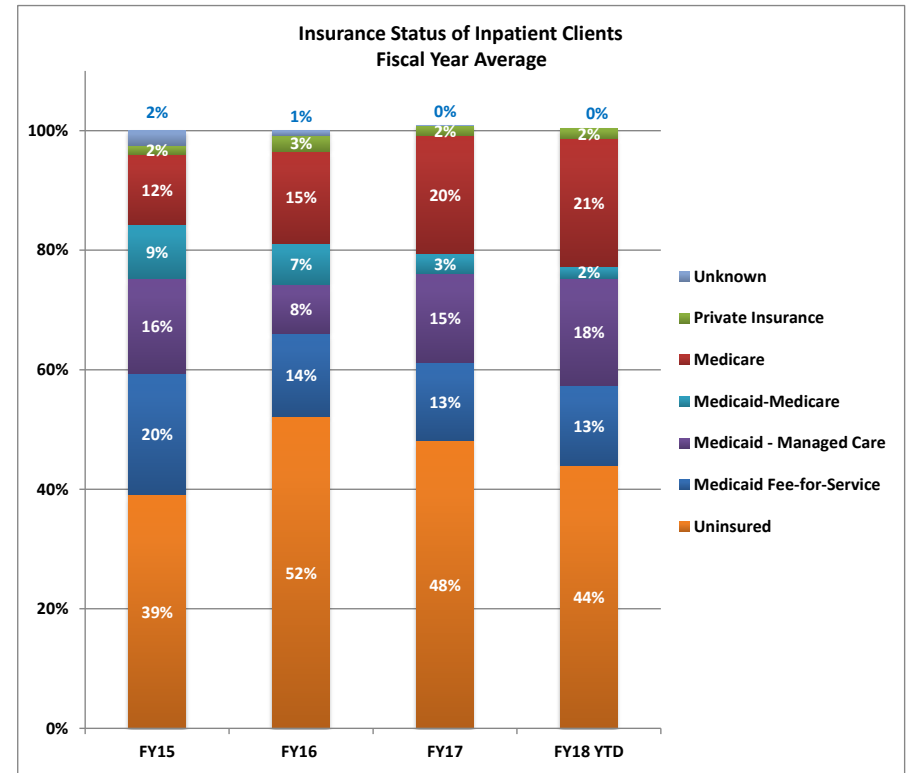
### RAWSON-NEAL (SOUTH)

	Medicaid Fee-for-Service	Medicaid - Managed Care	Medicaid-Medicare	Medicare	Private Insurance	Uninsured	Unknown
Jul-16	9%	9%	5%	18%	2%	57%	0%
Aug-16	10%	9%	5%	16%	2%	58%	0%
Sep-16	9%	8%	5%	17%	0%	62%	0%
Oct-16	11%	9%	2%	19%	0%	58%	0%
Nov-16	13%	13%	0%	20%	0%	54%	0%
Dec-16	11%	13%	1%	20%	0%	54%	0%
Jan-17	11%	14%	2%	18%	0%	55%	0%
Feb-17	21%	15%	2%	21%	0%	52%	0%
Mar-17	11%	18%	2%	20%	1%	48%	0%
Apr-17	10%	19%	1%	22%	0%	47%	0%
May-17	9%	21%	0%	24%	1%	45%	0%
Jun-17	7%	23%	0%	22%	2%	47%	0%
Jul-17	9%	21%	0%	21%	2%	47%	0%
Aug-17	10%	20%	0%	20%	1%	49%	0%
Sep-17	9%	21%	0%	19%	1%	50%	0%
Oct-17							
Nov-17							
Dec-17							
Jan-18							
Feb-18							
Mar-18							
Apr-18							
May-18							
Jun-18							

## Insurance Status of Adult Inpatient Clients (Monthly Average) State Wide

### STATEWIDE

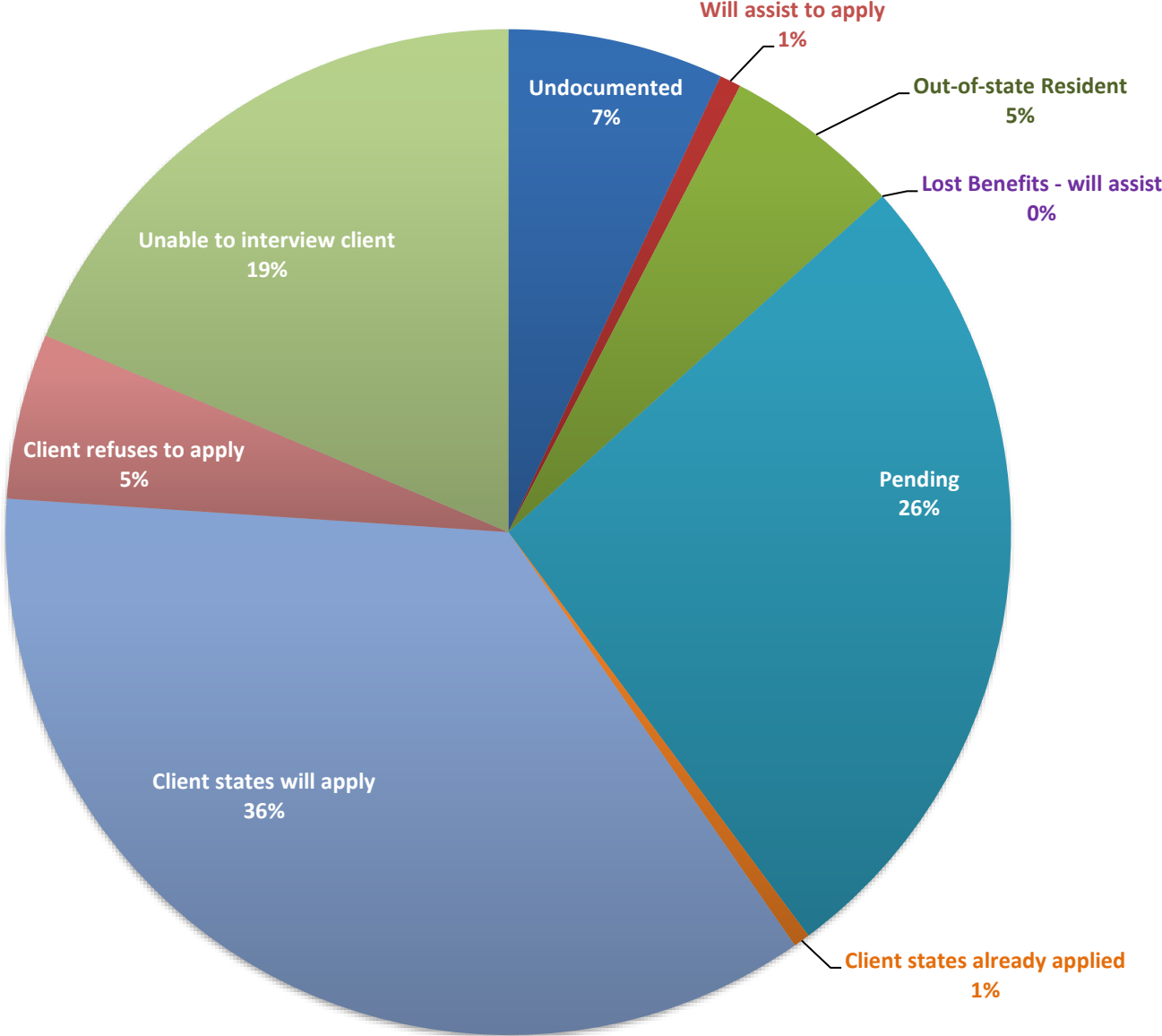
	Medicaid Fee-for-Service	Medicaid - Managed Care	Medicaid-Medicare	Medicare	Private Insurance	Uninsured	Unknown
Jul-16	13%	11%	5%	17%	4%	50%	0%
Aug-16	13%	10%	5%	17%	2%	53%	0%
Sep-16	11%	9%	5%	17%	1%	56%	0%
Oct-16	14%	9%	2%	21%	1%	52%	0%
Nov-16	14%	20%	2%	21%	1%	50%	0%
Dec-16	13%	13%	3%	20%	0%	54%	0%
Jan-17	14%	13%	4%	18%	1%	50%	0%
Feb-17	14%	16%	3%	20%	0%	47%	0%
Mar-17	14%	18%	3%	20%	2%	43%	0%
Apr-17	12%	18%	4%	21%	2%	43%	0%
May-17	12%	20%	2%	23%	4%	40%	0%
Jun-17	12%	22%	1%	21%	3%	41%	0%
Jul-17	13%	19%	2%	22%	2%	43%	0%
Aug-17	15%	17%	1%	21%	2%	45%	0%
Sep-17	12%	18%	3%	21%	1%	44%	0%
Oct-17							
Nov-17							
Dec-17							
Jan-18							
Feb-18							
Mar-18							
Apr-18							
May-18							
Jun-18							



### Fiscal Year Averages

Fiscal Year	Medicaid Fee-for-Service	Medicaid - Managed Care	Medicaid-Medicare	Medicare	Private Insurance	Uninsured	Unknown
FY15	20%	16%	9%	12%	2%	39%	2%
FY16	14%	8%	7%	15%	3%	52%	1%
FY17	13%	15%	3%	20%	2%	48%	0%
FY18 YTD	13%	18%	2%	21%	2%	44%	0%

### Reason Uninsured for Adult Inpatient Clients - Statewide, FY18 YTD



## Uninsured Reason for Adult Inpatient Clients (Monthly Average)

**DINI-TOWNSEND (NORTH)**

	Undocu-mented	Will assist to apply	Out-of-state Resident	Lost Benefits - will assist	Pending	Client states already applied	Client states will apply	Client refuses to apply	Unable to interview client
Jul-16	13%	22%	0%	13%	0%	0%	0%	17%	35%
Aug-16	0%	25%	0%	0%	10%	45%	0%	0%	20%
Sep-16	10%	0%	0%	0%	31%	48%	0%	0%	10%
Oct-16	0%	0%	0%	0%	100%	0%	0%	0%	0%
Nov-16	10%	0%	0%	0%	60%	25%	0%	0%	5%
Dec-16	11%	2%	13%	0%	43%	2%	0%	26%	4%
Jan-17	19%	0%	12%	4%	35%	8%	0%	23%	0%
Feb-17	11%	0%	37%	0%	47%	0%	0%	5%	0%
Mar-17	25%	0%	4%	0%	58%	0%	4%	4%	4%
Apr-17	14%	0%	50%	0%	27%	0%	9%	0%	0%
May-17	7%	0%	43%	0%	43%	0%	7%	0%	0%
Jun-17	24%	0%	62%	0%	10%	0%	0%	5%	0%
Jul-17	4%	0%	48%	0%	30%	4%	0%	0%	13%
Aug-17	10%	13%	50%	0%	13%	3%	0%	3%	7%
Sep-17	5%	15%	55%	0%	20%	0%	0%	5%	0%
Oct-17									
Nov-17									
Dec-17									
Jan-18									
Feb-18									
Mar-18									
Apr-18									
May-18									
Jun-18									

**RAWSON-NEAL (SOUTH)**

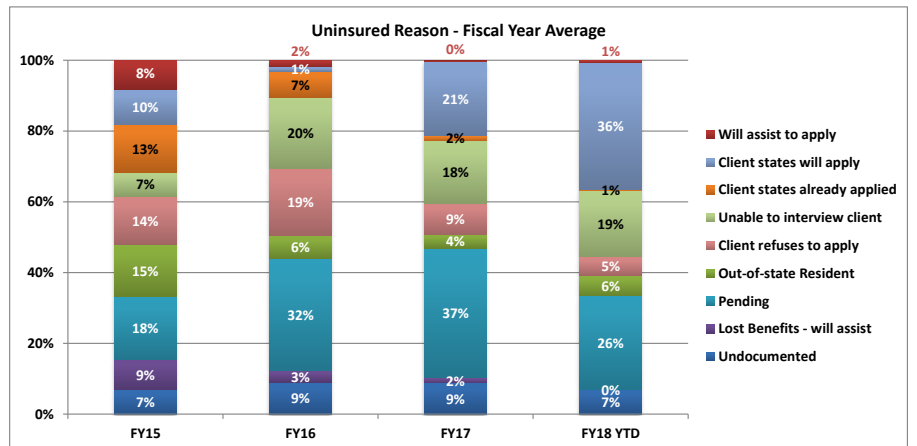
	Undocu-mented	Will assist to apply	Out-of-state Resident	Lost Benefits - will assist	Pending	Client states already applied	Client states will apply	Client refuses to apply	Unable to interview client
Jul-16	7%	0%	1%	2%	40%	2%	12%	11%	24%
Aug-16	5%	0%	2%	3%	34%	1%	10%	10%	35%
Sep-16	5%	0%	1%	2%	41%	2%	8%	8%	33%
Oct-16	8%	0%	3%	3%	37%	2%	12%	9%	26%
Nov-16	10%	0%	3%	3%	36%	0%	18%	13%	16%
Dec-16	13%	0%	4%	1%	38%	0%	22%	10%	13%
Jan-17	9%	0%	2%	1%	37%	0%	27%	14%	9%
Feb-17	7%	0%	1%	1%	39%	0%	30%	9%	12%
Mar-17	10%	0%	2%	1%	41%	0%	23%	8%	14%
Apr-17	12%	0%	8%	1%	36%	0%	25%	4%	15%
May-17	8%	0%	6%	0%	33%	0%	38%	4%	11%
Jun-17	9%	0%	2%	0%	29%	1%	43%	5%	10%
Jul-17	7%	0%	1%	0%	32%	0%	43%	6%	12%
Aug-17	5%	0%	1%	0%	28%	0%	42%	5%	19%
Sep-17	10%	0%	3%	0%	21%	1%	32%	6%	28%
Oct-17									
Nov-17									
Dec-17									
Jan-18									
Feb-18									
Mar-18									
Apr-18									
May-18									
Jun-18									

**STATEWIDE**

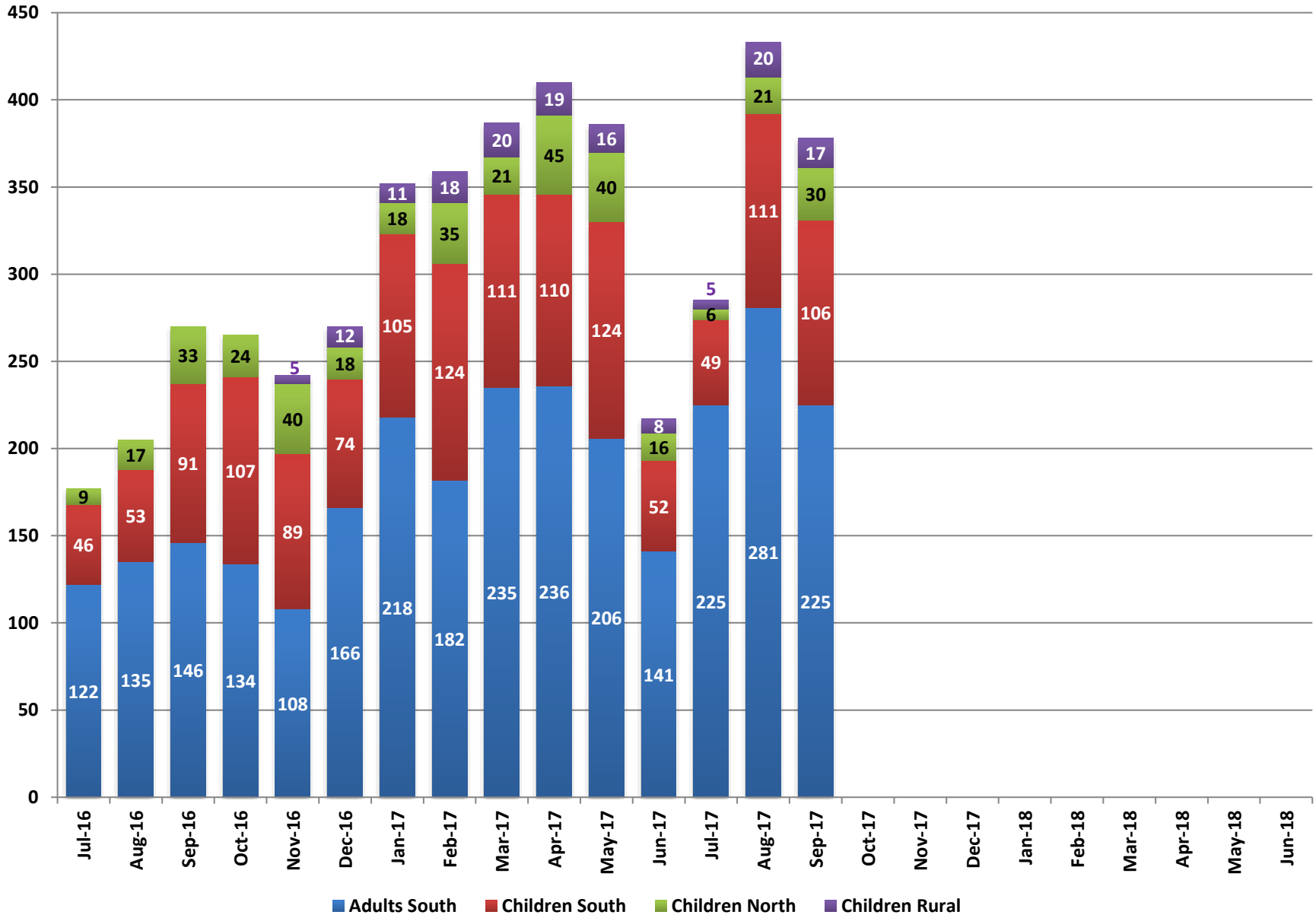
	Undocu-mented	Will assist to apply	Out-of-state Resident	Lost Benefits - will assist	Pending	Client states already applied	Client states will apply	Client refuses to apply	Unable to interview client
Jul-16	7%	1%	1%	3%	38%	2%	11%	12%	25%
Aug-16	4%	1%	2%	3%	33%	3%	9%	10%	34%
Sep-16	5%	0%	1%	2%	40%	4%	8%	7%	32%
Oct-16	8%	0%	3%	3%	35%	6%	11%	9%	25%
Nov-16	10%	0%	3%	2%	38%	2%	17%	12%	15%
Dec-16	12%	0%	4%	1%	39%	0%	19%	12%	12%
Jan-17	10%	0%	3%	1%	37%	1%	25%	14%	9%
Feb-17	7%	0%	3%	1%	40%	0%	28%	9%	11%
Mar-17	11%	0%	2%	1%	42%	0%	22%	7%	14%
Apr-17	12%	0%	11%	1%	35%	0%	23%	4%	14%
May-17	8%	0%	8%	0%	33%	0%	36%	4%	11%
Jun-17	10%	0%	6%	0%	28%	1%	40%	5%	10%
Jul-17	7%	0%	5%	0%	32%	0%	39%	5%	12%
Aug-17	5%	1%	5%	0%	27%	0%	39%	5%	18%
Sep-17	9%	1%	7%	0%	21%	1%	29%	6%	26%
Oct-17									
Nov-17									
Dec-17									
Jan-18									
Feb-18									
Mar-18									
Apr-18									
May-18									
Jun-18									

**Fiscal Year Averages**

Fiscal Year	Undocu-mented	Will assist to apply	Out-of-state Resident	Lost Benefits - will assist	Pending	Client states already applied	Client states will apply	Client refuses to apply	Unable to interview client
FY15	7%	8%	15%	9%	18%	13%	10%	14%	7%
FY16	9%	2%	6%	3%	32%	7%	1%	19%	20%
FY17	9%	0%	4%	2%	37%	2%	21%	9%	18%
FY18 YTD	7%	1%	6%	0%	26%	1%	36%	5%	19%



## Mobile Crisis Clients Served



## Children's Mobile Crisis

Children South						
	Total Calls	Clients Served (Team Responded)	Hospitalization	Hospital Diversion	Stabilization Recommended	Hospital Diversion Rate
Jul-16	67	46	7	39	23	85%
Aug-16	74	53	6	47	33	89%
Sep-16	129	91	9	82	64	90%
Oct-16	152	107	12	95	80	89%
Nov-16	127	89	9	80	49	90%
Dec-16	113	74	7	67	45	91%
Jan-17	136	105	14	91	75	87%
Feb-17	172	124	7	117	56	94%
Mar-17	158	111	15	96	52	86%
Apr-17	165	110	9	101	55	92%
May-17	201	124	12	112	57	90%
Jun-17	84	52	8	44	27	85%
Jul-17	81	49	10	39	21	80%
Aug-17	157	111	17	94	57	85%
Sep-17	175	106	10	96	46	91%
Oct-17						
Nov-17						
Dec-17						
Jan-18						
Feb-18						
Mar-18						
Apr-18						
May-18						
Jun-18						

Children North						
	Total Calls	Clients Served (Team Responded)	Hospitalization	Hospital Diversion	Stabilization Recommended	Hospital Diversion Rate
Jul-16	15	9	2	7	2	78%
Aug-16	34	17	4	13	10	76%
Sep-16	56	33	10	23	15	70%
Oct-16	44	24	4	20	10	83%
Nov-16	53	40	6	34	22	85%
Dec-16	46	18	3	15	8	83%
Jan-17	33	18	5	13	11	72%
Feb-17	67	35	5	30	21	86%
Mar-17	49	21	7	19	17	90%
Apr-17	54	45	6	39	32	87%
May-17	66	40	9	31	22	78%
Jun-17	30	16	5	11	8	69%
Jul-17	11	6	0	6	1	100%
Aug-17	49	21	3	18	15	86%
Sep-17	52	30	1	29	18	97%
Oct-17						
Nov-17						
Dec-17						
Jan-18						
Feb-18						
Mar-18						
Apr-18						
May-18						
Jun-18						

Children Rural						
	Total Calls	Clients Served (Team Responded)	Hospitalization	Hospital Diversion	Stabilization Recommended	Hospital Diversion Rate
Jul-16						
Aug-16						
Sep-16						
Oct-16						
Nov-16	6	5	1	4	2	80%
Dec-16	21	12	1	11	7	92%
Jan-17	15	11	2	9	3	82%
Feb-17	32	18	3	15	4	83%
Mar-17	28	20	2	18	7	90%
Apr-17	36	19	5	14	4	74%
May-17	29	16	4	12	5	75%
Jun-17	14	8	3	5	0	63%
Jul-17	9	5	0	5	2	100%
Aug-17	28	20	2	18	9	90%
Sep-17	28	17	1	16	2	94%
Oct-17						
Nov-17						
Dec-17						
Jan-18						
Feb-18						
Mar-18						
Apr-18						
May-18						
Jun-18						

## Mobile Crisis Adults and Total Clients Served

Adults South				
	Clients Served	Hospitalization	Hospital Diversion	Hospital Diversion Rate
Jul-16	122	55	67	55%
Aug-16	135	50	85	63%
Sep-16	146	45	101	69%
Oct-16	134	49	85	63%
Nov-16	108	37	71	66%
Dec-16	166	57	109	66%
Jan-17	218	70	148	68%
Feb-17	182	44	138	76%
Mar-17	235	48	187	80%
Apr-17	178	44	134	75%
May-17	206	45	161	78%
Jun-17	141	48	93	66%
Jul-17	225	100	125	56%
Aug-17	281	67	214	76%
Sep-17	225	60	165	73%
Oct-17				
Nov-17				
Dec-17				
Jan-18				
Feb-18				
Mar-18				
Apr-18				
May-18				
Jun-18				

Total Clients Served					
	Adults South	Children South	Children North	Children Rural	Total
Jul-16	122	46	9		177
Aug-16	135	53	17		205
Sep-16	146	91	33		270
Oct-16	134	107	24		265
Nov-16	108	89	40	5	242
Dec-16	166	74	18	12	270
Jan-17	218	105	18	11	352
Feb-17	182	124	35	18	359
Mar-17	235	111	21	20	387
Apr-17	178	110	45	19	352
May-17	206	124	40	16	386
Jun-17	141	52	16	8	217
Jul-17	225	49	6	5	285
Aug-17	281	111	21	20	433
Sep-17	225	106	30	17	378
Oct-17					
Nov-17					
Dec-17					
Jan-18					
Feb-18					
Mar-18					
Apr-18					
May-18					
Jun-18					

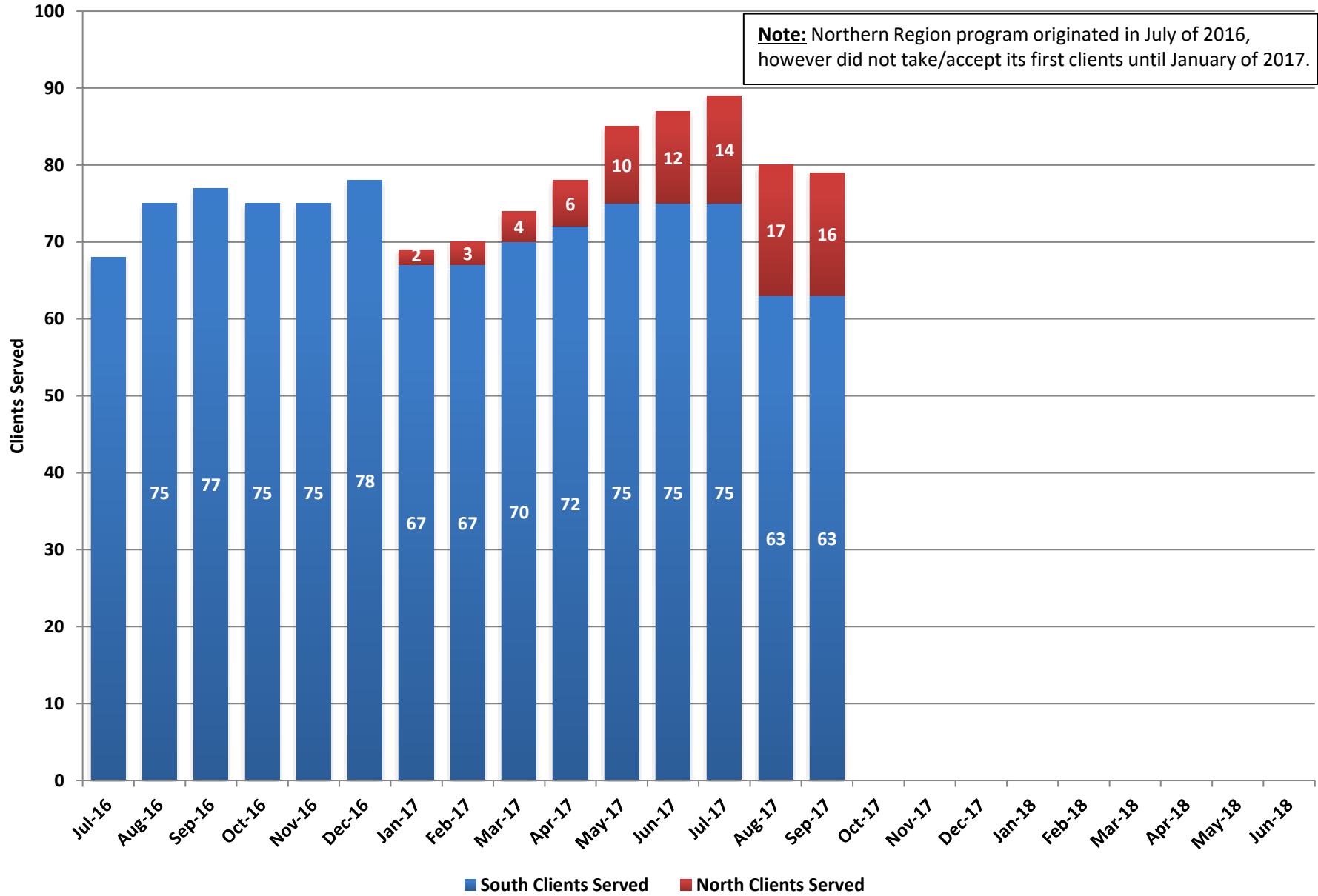
**Fiscal Year Totals**

Fiscal Year	Adults South		Children South		Children North		Children Rural		Total	
	Clients Served	Hospital Diversion Rate	Clients Served	Hospital Diversion Rate	Clients Served	Hospital Diversion Rate	Clients Served	Hospital Diversion Rate	Clients Served	Hospital Diversion Rate
FY14			96	90%						
FY15	1,772	42%	473	88%	127	81%			2,372	53%
FY16	1,255	65%	750	87%	224	78%			2,229	74%
FY17	1,971	70%	1,086	89%	316	81%	109	84%	3,482	77%
FY18 YTD	731	69%	266	86%	57	93%	42	93%	1,096	75%



### Adult Assisted Outpatient Treatment (AOT)

**Note:** Northern Region program originated in July of 2016, however did not take/accept its first clients until January of 2017.

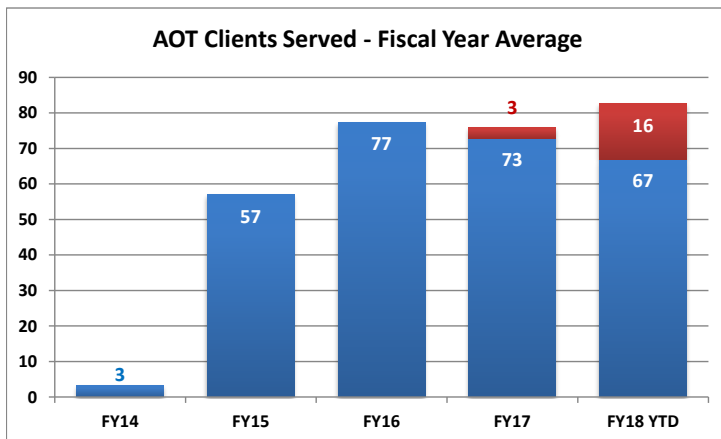


## Adult Assisted Outpatient Treatment (AOT)

	South Clients Served	North Clients Served
Jul-16	68	0
Aug-16	75	0
Sep-16	77	0
Oct-16	75	0
Nov-16	75	0
Dec-16	78	0
Jan-17	67	2
Feb-17	67	3
Mar-17	70	4
Apr-17	72	6
May-17	75	10
Jun-17	75	12
Jul-17	75	14
Aug-17	63	17
Sep-17	63	16
Oct-17		
Nov-17		
Dec-17		
Jan-18		
Feb-18		
Mar-18		
Apr-18		
May-18		
Jun-18		

### AOT Clients by Status

	Referrals	Petitions	Court Orders	Re-petitions	Denied by AOT	Denied by Court	Terminated by Court	Graduated
Jul-16	10	14	2	10	2	0	6	4
Aug-16	17	10	6	4	5	0	0	2
Sep-16	8	7	3	5	4	0	3	0
Oct-16	6	6	4	1	1	0	0	10
Nov-16	13	6	2	4	8	0	4	1
Dec-16	23	10	3	6	5	5	0	0
Jan-17	13	11	6	3	3	0	0	0
Feb-17	12	3	6	1	6	4	1	0
Mar-17	10	5	5	0	2	0	1	1
Apr-17	15	4	1	0	4	0	1	0
May-17	13	9	2	5	0	2	0	0
Jun-17	16	4	3	0	4	1	0	0
Jul-17	5	8	7	12	3	0	2	3
Aug-17	9	7	11	12	3	3	2	2
Sep-17	19	6	8	12	1	1	2	3
Oct-17								
Nov-17								
Dec-17								
Jan-18								
Feb-18								
Mar-18								
Apr-18								
May-18								
Jun-18								



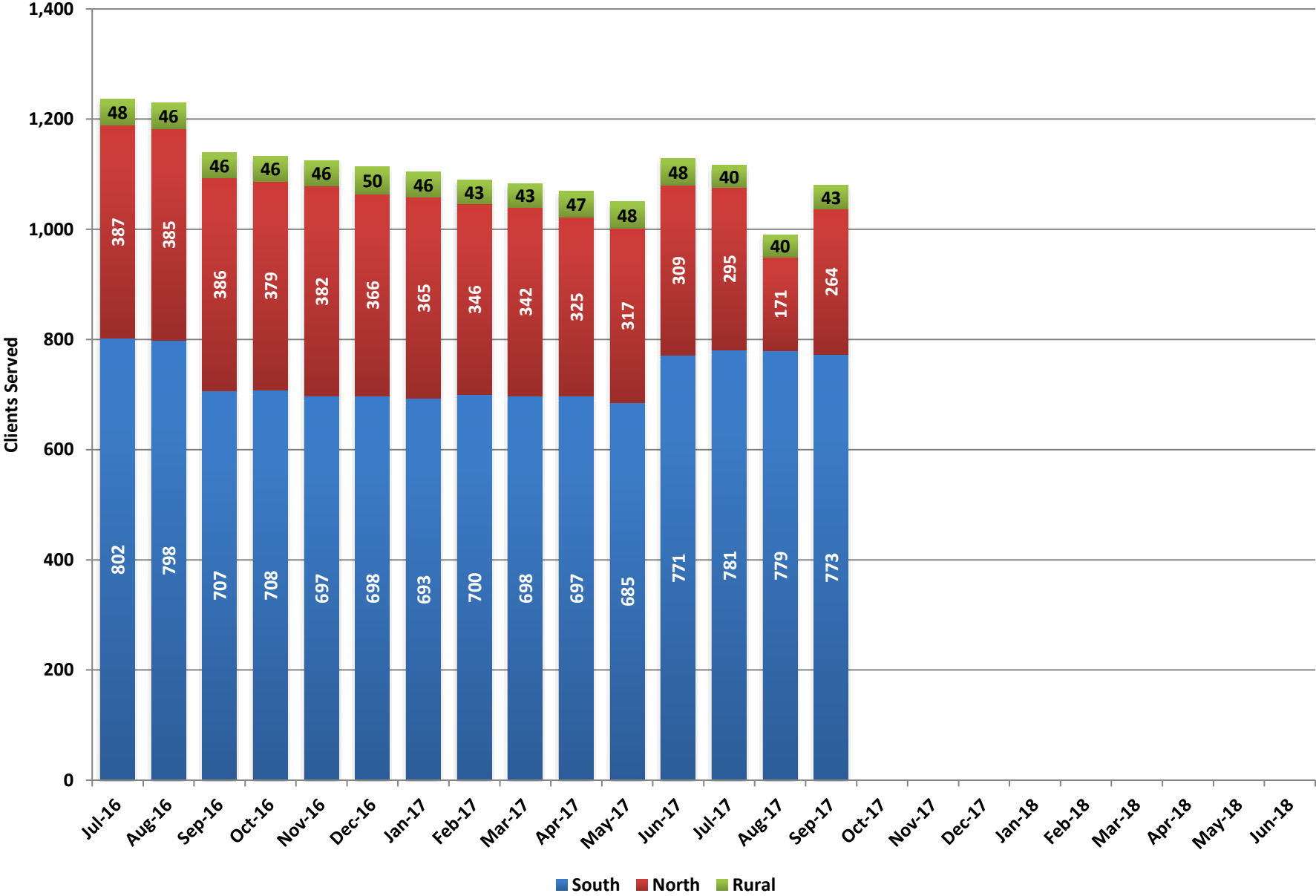
### Fiscal Year Averages

Fiscal Year	South Clients Served	North Clients Served
FY14	3	
FY15	57	
FY16	77	
FY17	73	3
FY18 YTD	67	16

Note: Budgeted caseload is 75 clients.

Note: Northern Region program originated in July 2016, however did not take/accept its first clients until January of 2017.

### Adult Housing Support by Region

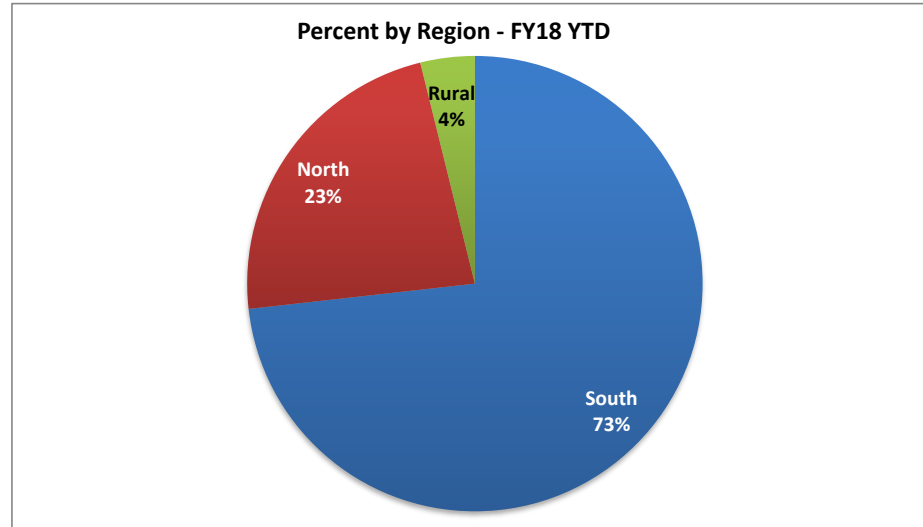


## Adult Housing Support by Region

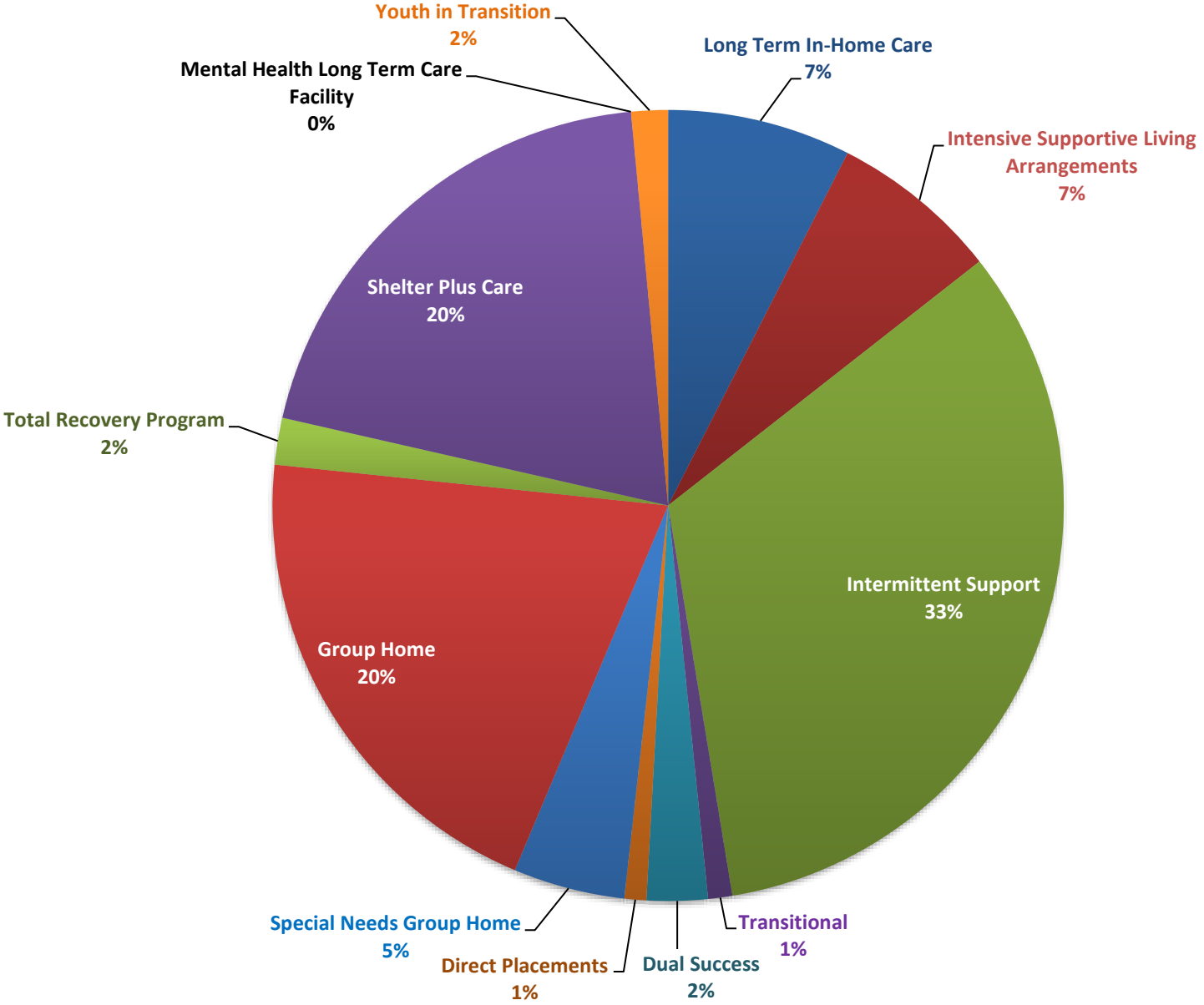
	South	North	Rural	Total Served
Jul-16	802	387	48	1,237
Aug-16	798	385	46	1,229
Sep-16	707	386	46	1,139
Oct-16	708	379	46	1,133
Nov-16	697	382	46	1,125
Dec-16	698	366	50	1,114
Jan-17	693	365	46	1,104
Feb-17	700	346	43	1,089
Mar-17	698	342	43	1,083
Apr-17	697	325	47	1,069
May-17	685	317	48	1,050
Jun-17	771	309	48	1,128
Jul-17	781	295	40	1,116
Aug-17	779	171	40	990
Sep-17	773	264	43	1,080
Oct-17				
Nov-17				
Dec-17				
Jan-18				
Feb-18				
Mar-18				
Apr-18				
May-18				
Jun-18				

### Fiscal Year Averages

Fiscal Year	South	North	Rural	Total Served
FY15	973	368	63	1,404
FY16	876	372	66	1,309
FY17	721	357	46	1,125
FY18 YTD	778	243	41	1,062



# Adult Housing Support by Type - FY18 YTD



## Housing Support by Type

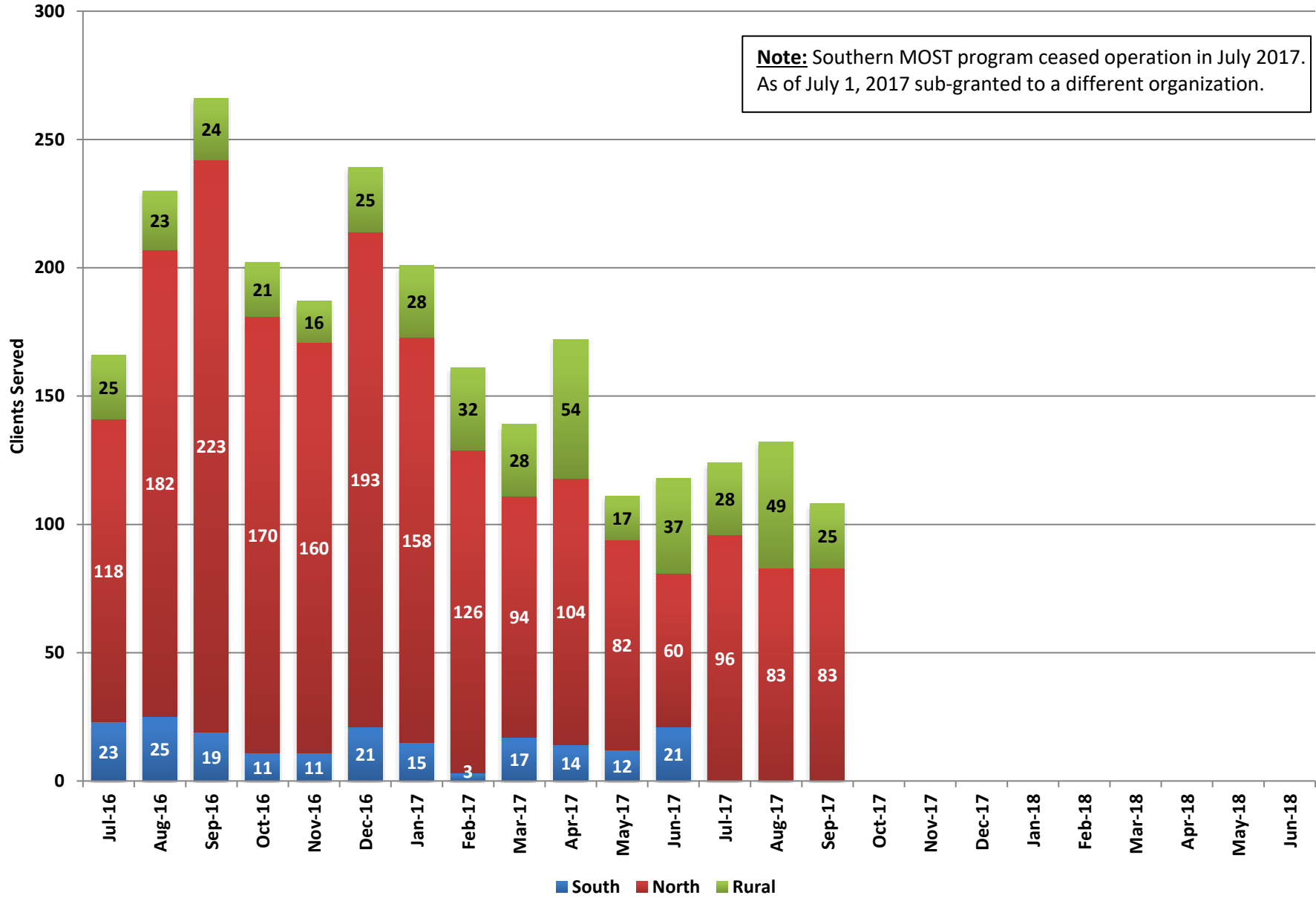
Statewide	Long Term In-Home Care	Intensive Supportive Living Arrangements	Intermittent Support	Transitional	Dual Success	Direct Placements	Special Needs Group Home	Group Home	Total Recovery Program	Shelter Plus Care	Mental Health Long Term Care Facility	Youth in Transition
Jul-16	19	27	531	11	28	23	47	274	20	243	0	14
Aug-16	18	27	533	17	27	24	47	260	19	243	0	14
Sep-16	17	28	510	20	27	21	40	226	19	219	0	12
Oct-16	16	27	511	15	27	24	40	223	20	218	0	12
Nov-16	16	28	472	12	27	20	38	221	24	209	0	12
Dec-16	49	36	462	15	27	20	38	219	22	215	0	11
Jan-17	48	37	453	18	27	17	37	218	24	213	0	12
Feb-17	47	35	439	15	27	18	35	221	28	212	0	12
Mar-17	47	34	439	14	27	17	35	220	29	211	0	10
Apr-17	47	29	427	16	27	19	35	217	27	212	0	9
May-17	46	33	415	10	27	20	36	215	22	212	0	9
Jun-17	53	92	418	5	27	21	39	223	24	209	0	10
Jul-17	77	75	409	7	26	12	47	226	22	211	0	1
Aug-17	80	70	308	9	26	16	47	195	18	202	0	10
Sep-17	78	72	317	15	26	0	49	216	20	212	0	36
Oct-17												
Nov-17												
Dec-17												
Jan-18												
Feb-18												
Mar-18												
Apr-18												
May-18												
Jun-18												

### *Fiscal Year Averages*

Fiscal Year Statewide	Long Term In-Home Care	Intensive Supportive Living Arrangements	Intermittent Support	Transitional	Dual Success	Direct Placements	Special Needs Group Home	Group Home	Total Recovery Program	Shelter Plus Care	Mental Health Long Term Care Facility	Youth in Transition
FY15	19	13	565	33	32	78	52	293	42	270	0	7
FY16	22	13	547	23	30	32	49	281	18	283	0	12
FY17	35	36	468	14	27	20	39	228	23	218	0	11
FY18 YTD	78	72	345	10	26	9	48	212	20	208	0	16

## Mobile Outreach Safety Team (MOST)

**Note:** Southern MOST program ceased operation in July 2017. As of July 1, 2017 sub-granted to a different organization.

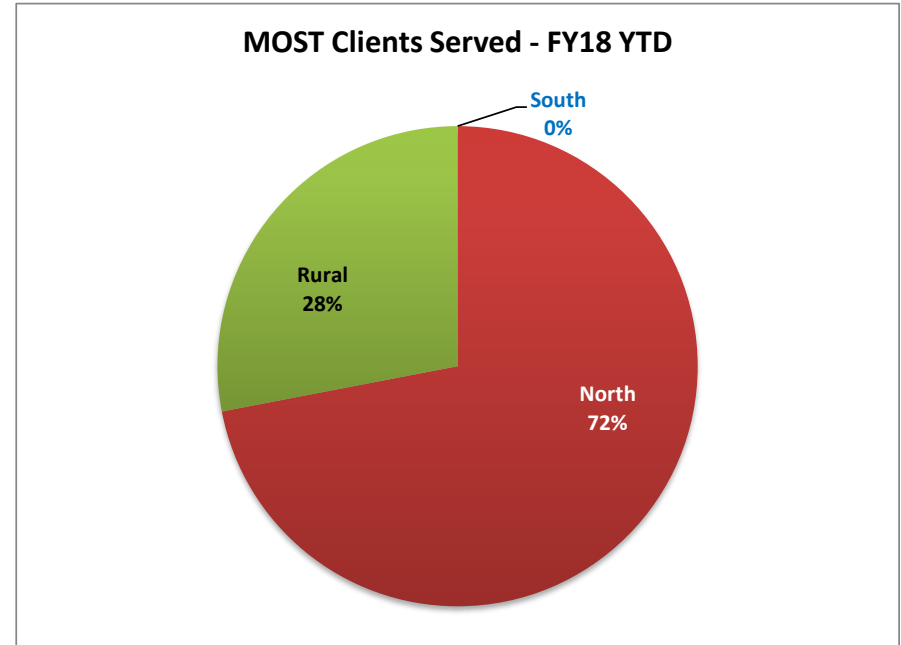


## Mobile Outreach Safety Team (MOST) Clients Served

	South	North	Rural	Total
Jul-16	23	118	25	166
Aug-16	25	182	23	230
Sep-16	19	223	24	266
Oct-16	11	170	21	202
Nov-16	11	160	16	187
Dec-16	21	193	25	239
Jan-17	15	158	28	201
Feb-17	3	126	32	161
Mar-17	17	94	28	139
Apr-17	14	104	54	172
May-17	12	82	17	111
Jun-17	21	60	37	118
Jul-17	0	96	28	124
Aug-17	0	83	49	132
Sep-17	0	83	25	108
Oct-17				
Nov-17				
Dec-17				
Jan-18				
Feb-18				
Mar-18				
Apr-18				
May-18				
Jun-18				

### Fiscal Year Averages

Fiscal Year	South	North	Rural	Total
FY15	10	192	10	213
FY16	32	145	16	193
FY17	16	139	28	183
FY18 YTD	0	87	34	121

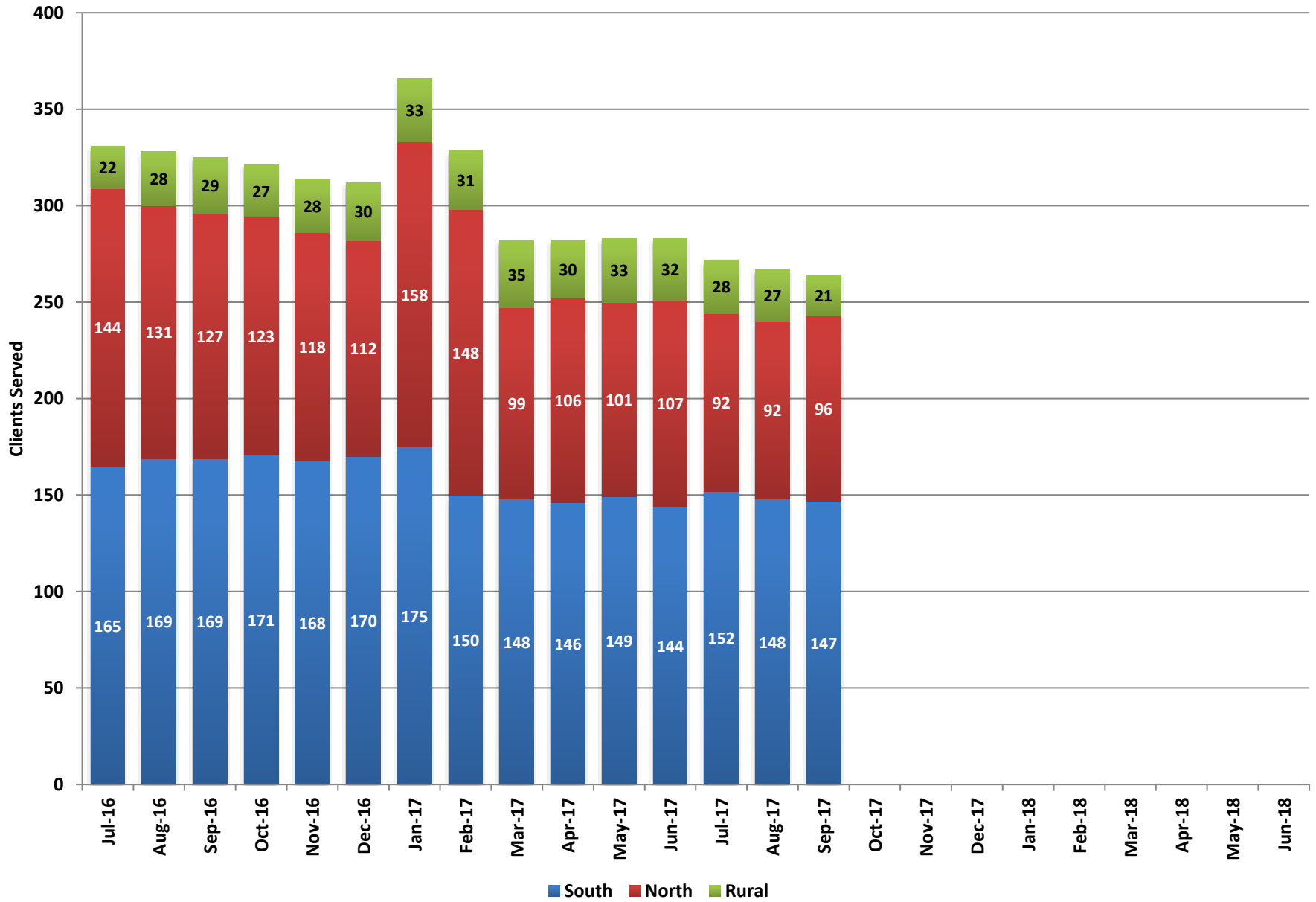


*Note: Beginning in September 2015, the data for the Rural region now includes Lyon County in addition to Carson City.*

*Note: Southern MOST program ceased operation in July 2017 - as of July 1, 2017 sub-granted to a different organization.*



# Mental Health Court



# Adult Mental Health Court

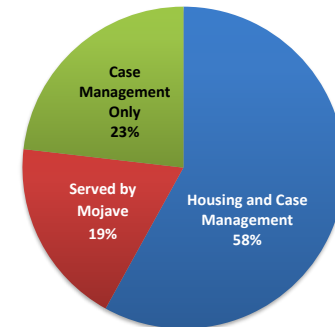
	South				North				Rural				Statewide			
	Housing and Case Management	Served by Mojave	Case Management Only	Total	Housing and Case Management	Served by Mojave	Case Management Only	Total	Housing and Case Management	Served by Mojave	Case Management Only	Total	Housing and Case Management	Served by Mojave	Case Management Only	Total Clients Served
*Jul-16	65	100	0	165	68	0	76	144	22		0	22	155	100	76	331
Aug-16	69	100	0	169	62	0	69	131	28		0	28	159	100	69	328
Sep-16	69	100	0	169	62	0	65	127	29		0	29	160	100	65	325
Oct-16	51	100	20	171	65	0	58	123	27		0	27	143	100	78	321
Nov-16	53	100	15	168	59	0	59	118	28		0	28	140	100	74	314
Dec-16	60	100	10	170	63	0	49	112	30		0	30	153	100	59	312
Jan-17	53	100	22	175	109	0	49	158	33		0	33	195	100	71	366
Feb-17	57	75	18	150	104	0	44	148	31		0	31	192	75	62	329
Mar-17	62	75	11	148	51	0	48	99	35		0	35	148	75	59	282
Apr-17	58	75	13	146	62	0	44	106	30		0	30	150	75	57	282
May-17	62	75	13	150	55	0	46	101	33		0	33	150	75	59	284
Jun-17	60	75	9	144	64	0	43	107	32		0	32	156	75	52	283
Jul-17	57	76	19	152	51	0	41	92	28		0	28	136	76	60	272
Aug-17	64	75	9	148	63	0	29	92	27		0	27	154	75	38	267
Sep-17	96	0	51	147	59	0	37	96	21		0	21	176	0	88	264
Oct-17																
Nov-17																
Dec-17																
Jan-18																
Feb-18																
Mar-18																
Apr-18																
May-18																
Jun-18																

**Fiscal Year Averages**

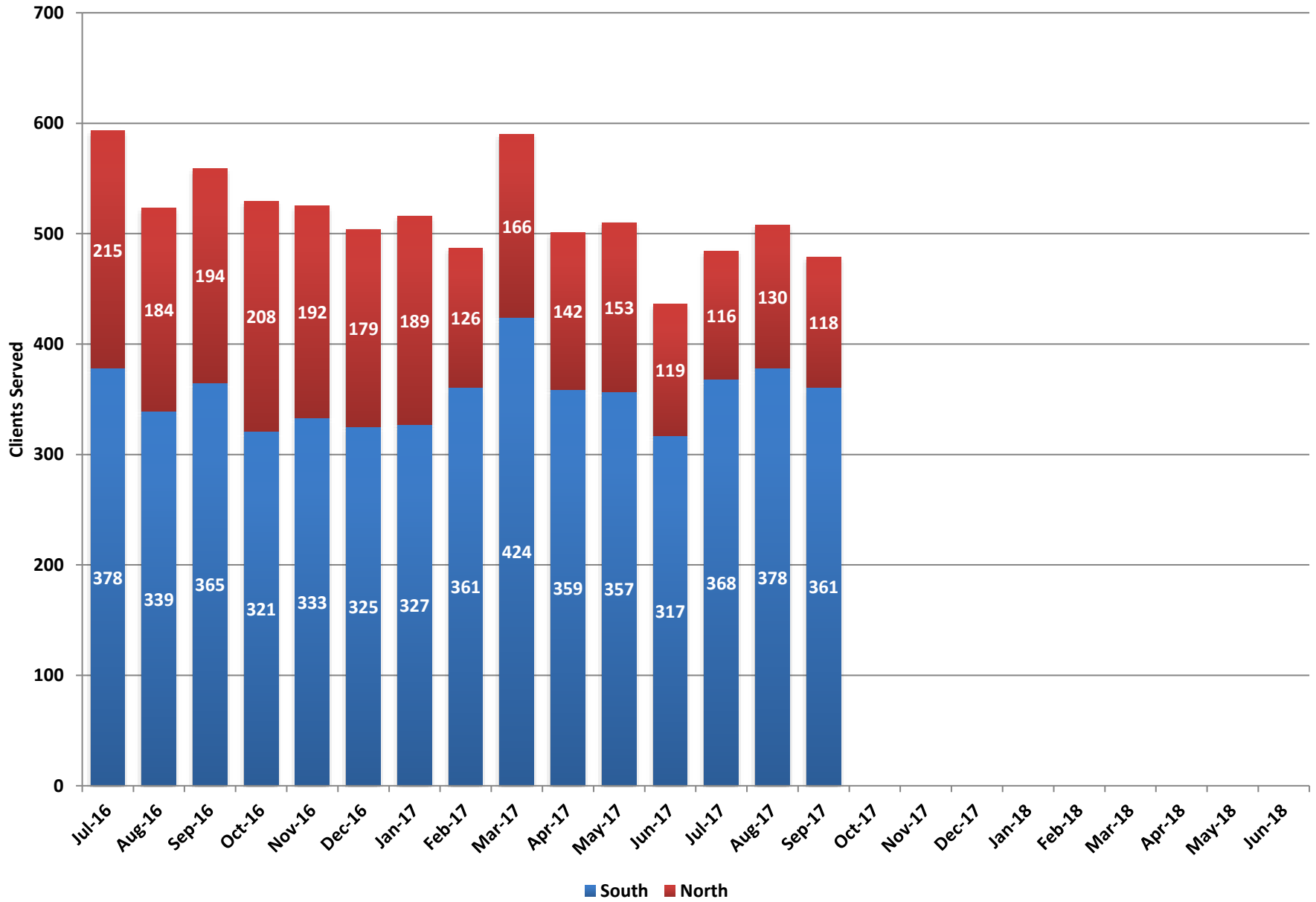
Fiscal Year	South				North				Rural				Statewide			
	Housing and Case Management	Served by Mojave	Case Management Only	Total	Housing and Case Management	Served by Mojave	Case Management Only	Total	Housing and Case Management	Served by Mojave	Case Management Only	Total	Housing and Case Management	Served by Mojave	Case Management Only	Total Clients Served
FY15	71	17	4	91	75	1	97	173	28		0	28	174	18	100	292
FY16	49	17	18	84	75	0	90	165	22		0	22	147	18	108	276
FY17	60	90	11	160	69	0	54	123	30		0	30	158	90	65	313
FY18 YTD	72	50	26	149	58	0	36	93	25		0	25	155	50	62	268

\* FY16&17 The Supreme Courts funded the Speciality Courts to increase the Mental Health Court caseload to 125. Mojave is directly contracted with the Speciality Courts so their caseload will increase from 25 to 125.

**Statewide by Type of Service - FY18 YTD**



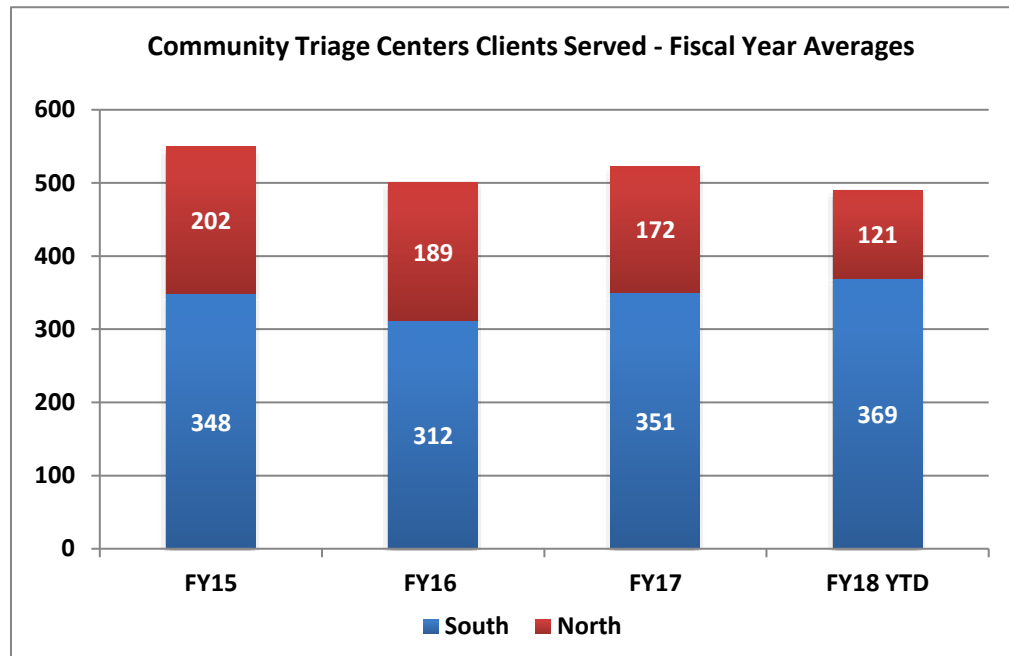
### Adult Community Triage Centers - Clients Served



## Adult Community Triage Centers

### Clients Served (Unduplicated)

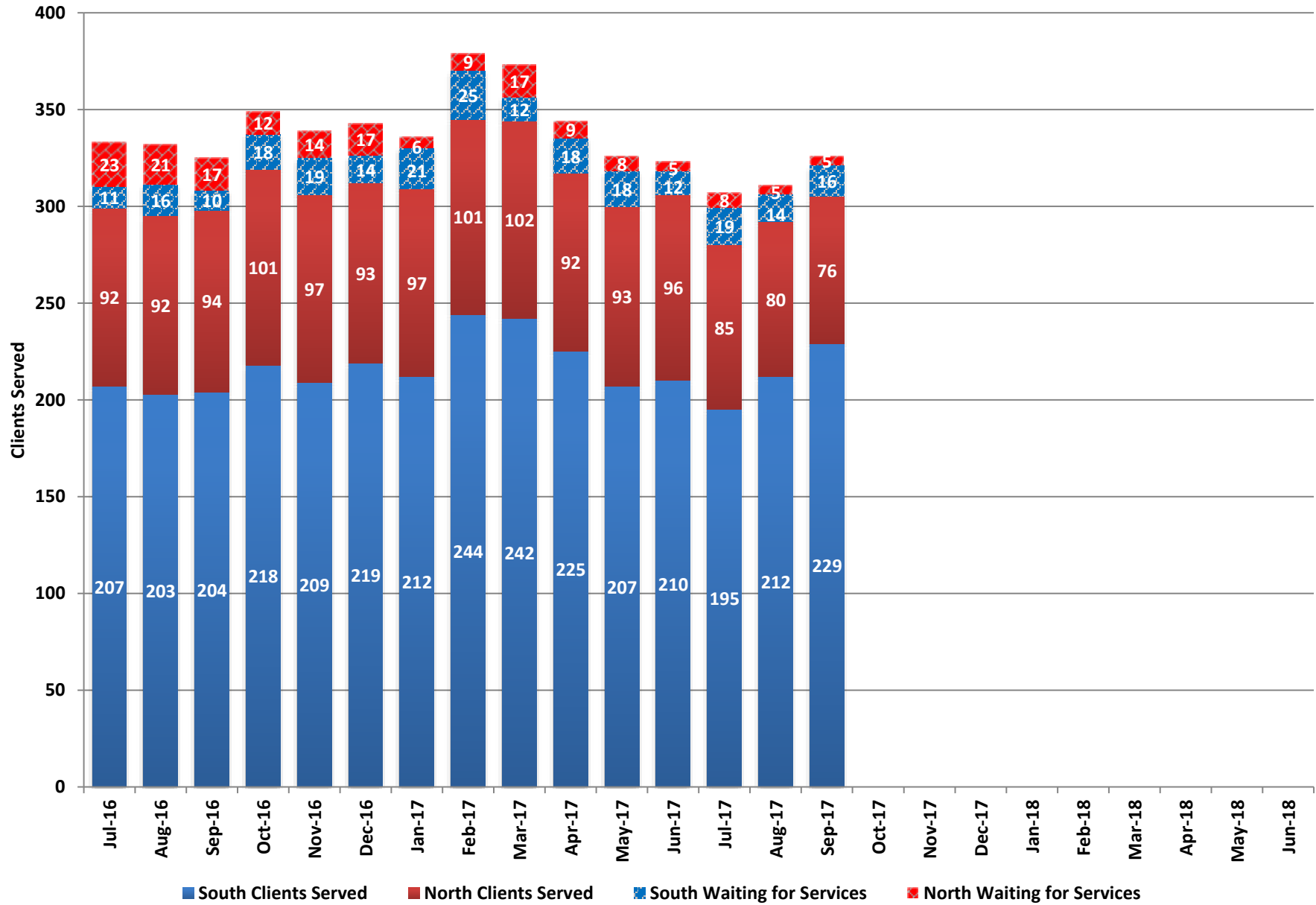
	South	North	Total
Jul-16	378	215	593
Aug-16	339	184	523
Sep-16	365	194	559
Oct-16	321	208	529
Nov-16	333	192	525
Dec-16	325	179	504
Jan-17	327	189	516
Feb-17	361	126	487
Mar-17	424	166	590
Apr-17	359	142	501
May-17	357	153	510
Jun-17	317	119	436
Jul-17	368	116	484
Aug-17	378	130	508
Sep-17	361	118	479
Oct-17			
Nov-17			
Dec-17			
Jan-18			
Feb-18			
Mar-18			
Apr-18			
May-18			
Jun-18			



### Fiscal Year Averages

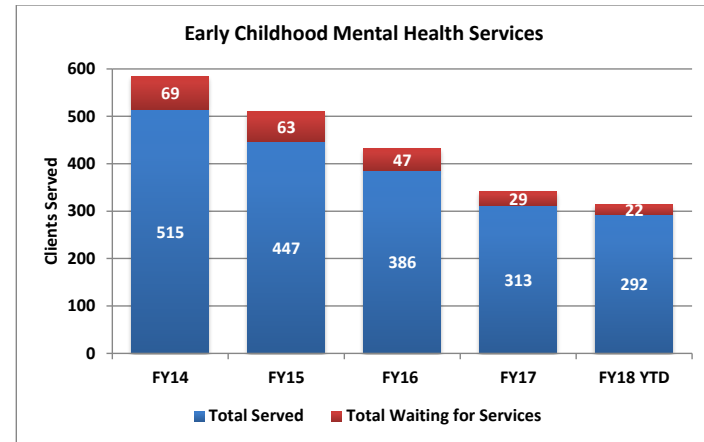
	South	North	Total
FY15	348	202	550
FY16	312	189	501
FY17	351	172	523
FY18 YTD	369	121	490

## Early Childhood Mental Health Services



## Early Childhood Mental Health Services

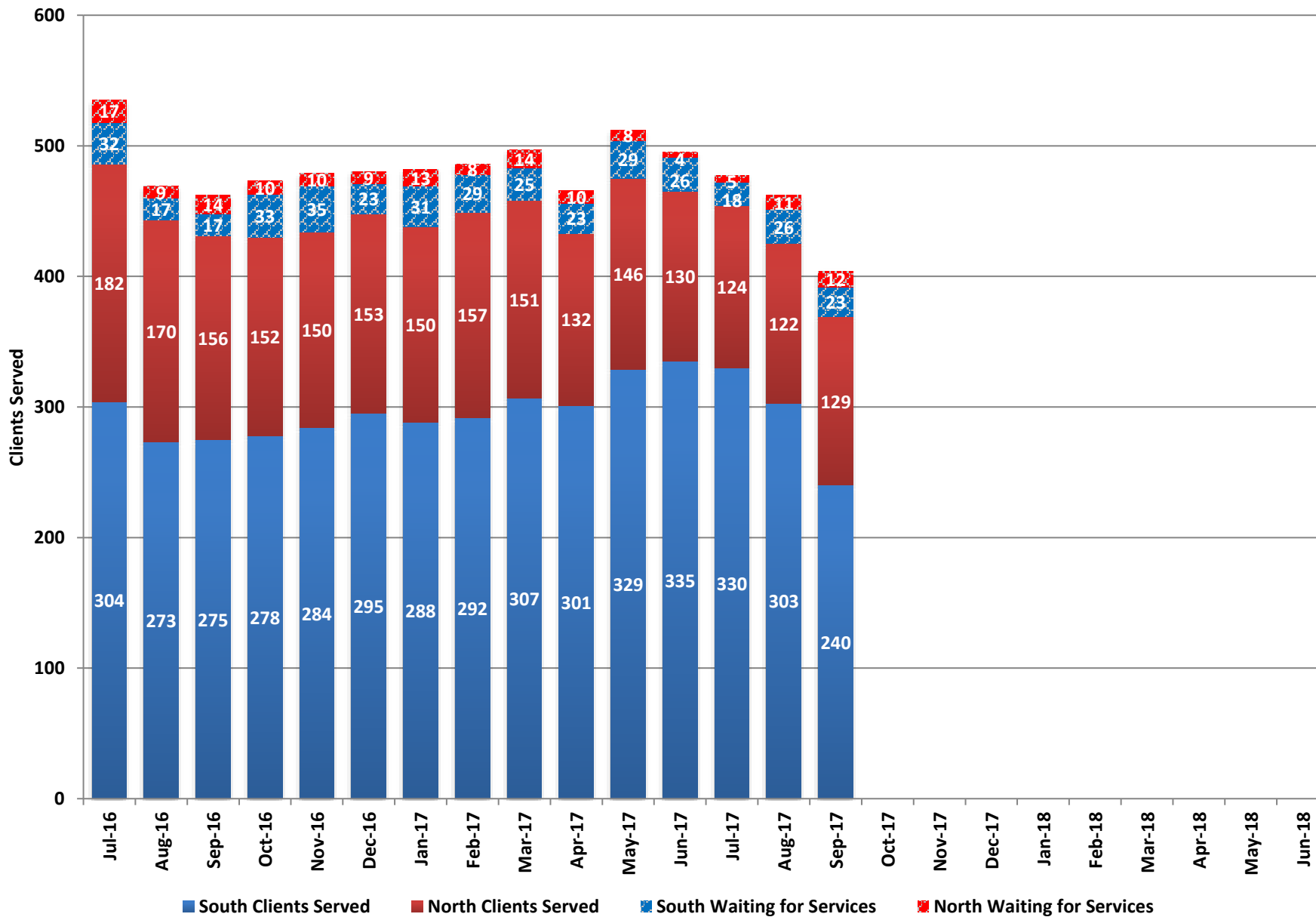
	South		North		Total	
	South Clients Served	South Waiting for Services	North Clients Served	North Waiting for Services	Total Served	Total Waiting for Services
Jul-16	207	11	92	23	299	34
Aug-16	203	16	92	21	295	37
Sep-16	204	10	94	17	298	27
Oct-16	218	18	101	12	319	30
Nov-16	209	19	97	14	306	33
Dec-16	219	14	93	17	312	31
Jan-17	212	21	97	6	309	27
Feb-17	244	25	101	9	345	34
Mar-17	242	12	102	17	344	29
Apr-17	225	18	92	9	317	27
May-17	207	18	93	8	300	26
Jun-17	210	12	96	5	306	17
Jul-17	195	19	85	8	280	27
Aug-17	212	14	80	5	292	19
Sep-17	229	16	76	5	305	21
Oct-17						
Nov-17						
Dec-17						
Jan-18						
Feb-18						
Mar-18						
Apr-18						
May-18						
Jun-18						



### Fiscal Year Averages

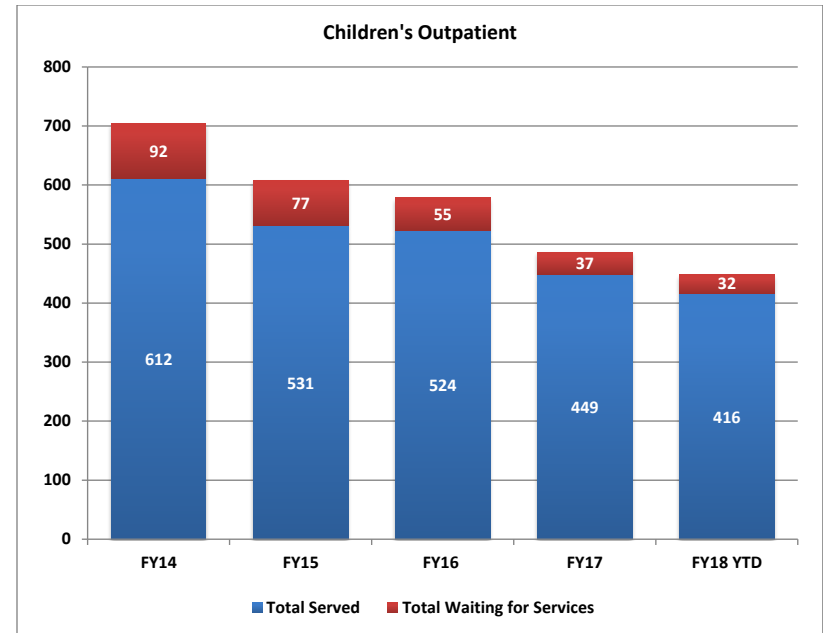
Fiscal Year	South Clients Served	South Waiting for Services	North Clients Served	North Waiting for Services	Total Served	Total Waiting for Services
FY14	351	45	164	24	515	69
FY15	298	37	149	27	447	63
FY16	234	17	152	30	386	47
FY17	217	16	96	13	313	29
FY18 YTD	212	16	80	6	292	22

### Children's Clinical Services/Outpatient



## Children's Clinical Services/Outpatient

	South Clients Served	South Waiting for Services	North Clients Served	North Waiting for Services	Total Served	Total Waiting for Services
Jul-16	304	32	182	17	486	49
Aug-16	273	17	170	9	443	26
Sep-16	275	17	156	14	431	31
Oct-16	278	33	152	10	430	43
Nov-16	284	35	150	10	434	45
Dec-16	295	23	153	9	448	32
Jan-17	288	31	150	13	438	44
Feb-17	292	29	157	8	449	37
Mar-17	307	25	151	14	458	39
Apr-17	301	23	132	10	433	33
May-17	329	29	146	8	475	37
Jun-17	335	26	130	4	465	30
Jul-17	330	18	124	5	454	23
Aug-17	303	26	122	11	425	37
Sep-17	240	23	129	12	369	35
Oct-17						
Nov-17						
Dec-17						
Jan-18						
Feb-18						
Mar-18						
Apr-18						
May-18						
Jun-18						

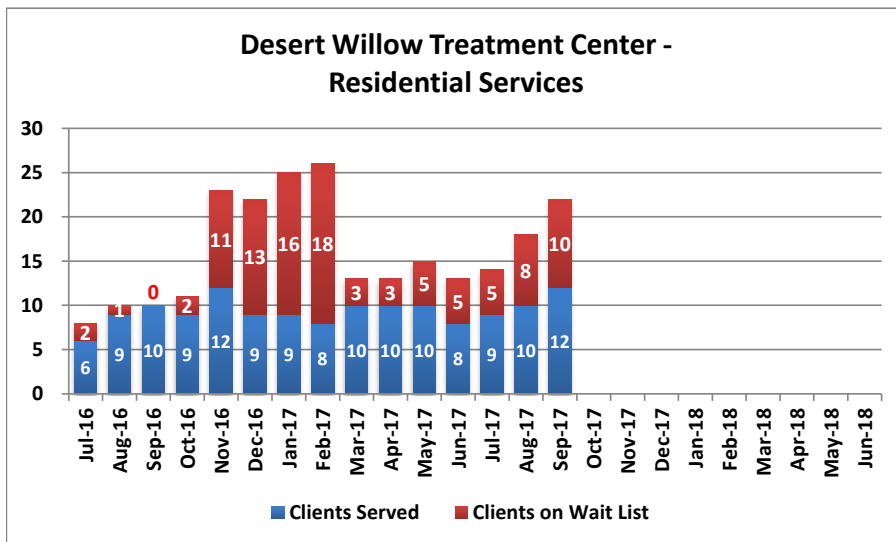
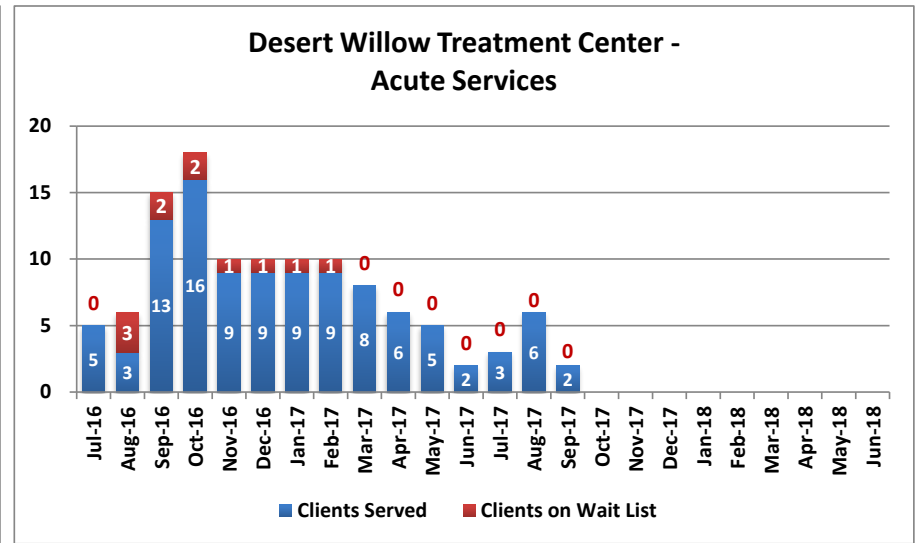
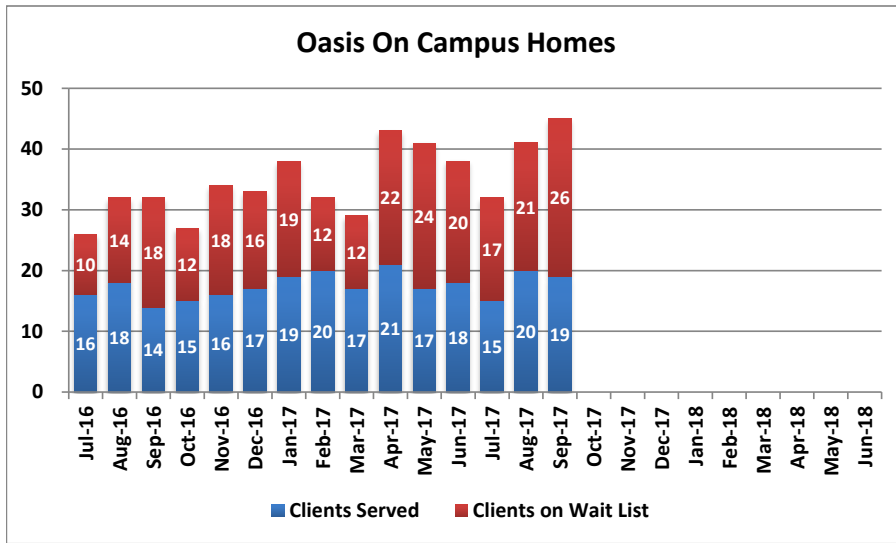


### Fiscal Year Averages

Fiscal Year	South Clients Served	South Waiting for Services	North Clients Served	North Waiting for Services	Total Served	Total Waiting for Services
FY14	398	65	214	27	612	92
FY15	341	38	189	39	531	77
FY16	335	25	189	30	524	55
FY17	297	27	152	11	449	37
FY18 YTD	291	22	125	9	416	32



## Children's Mental Health - South



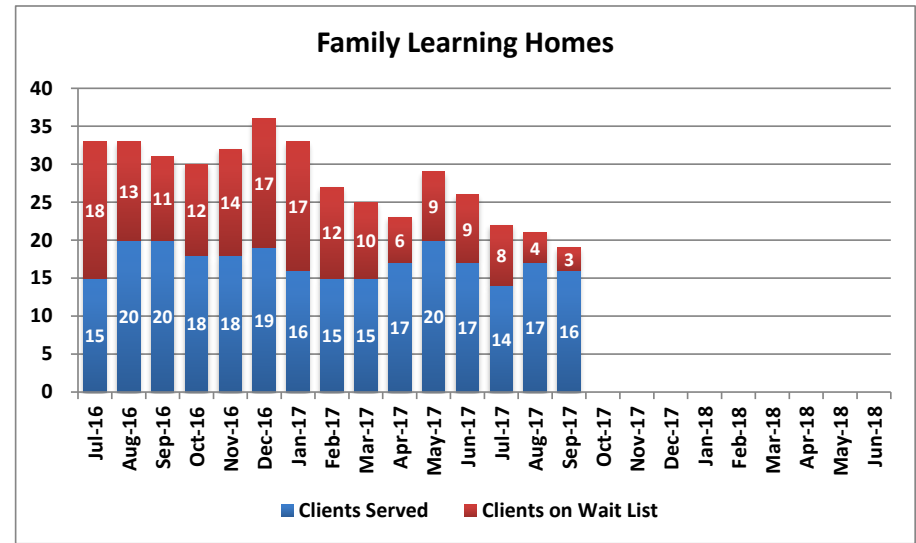
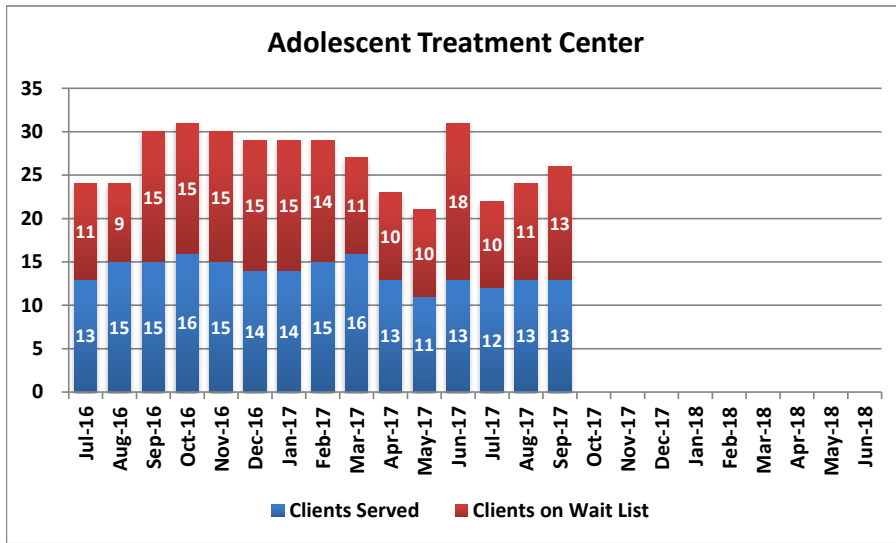
### Children's Mental Health - South

	Oasis On Campus Homes			Desert Willow Treatment Center - Acute Services			Desert Willow Treatment Center - Residential Services		
	Clients Served	Clients on Wait List	Average Length of Stay	Clients Served	Clients on Wait List	Average Length of Stay	Clients Served	Clients on Wait List	Average Length of Stay
Jul-16	16	10	197	5	0	198	6	2	41
Aug-16	18	14	170	3	3	222	9	1	39
Sep-16	14	18	194	13	2	36	10	0	42
Oct-16	15	12	179	16	2	44	9	2	54
Nov-16	16	18	171	9	1	45	12	11	71
Dec-16	17	16	112	9	1	63	9	13	74
Jan-17	19	19	86	9	1	93	9	16	98
Feb-17	20	12	104	9	1	50	8	18	125
Mar-17	17	12	119	8	0	67	10	3	106
Apr-17	21	22	124	6	0	5	10	3	48
May-17	17	24	170	5	0	20	10	5	79
Jun-17	18	20	88	2	0	32	8	5	63
Jul-17	15	17	97	3	0	15	9	5	58
Aug-17	20	21	86	6	0	13	10	8	81
Sep-17	19	26	99	2	0	23	12	10	81
Oct-17									
Nov-17									
Dec-17									
Jan-18									
Feb-18									
Mar-18									
Apr-18									
May-18									
Jun-18									

**Fiscal Year Averages**

Fiscal Year	Oasis On Campus Homes			Desert Willow Treatment Center - Acute Services			Desert Willow Treatment Center - Residential Services		
	Clients Served	Clients on Wait List	Average Length of Stay	Clients Served	Clients on Wait List	Average Length of Stay	Clients Served	Clients on Wait List	Average Length of Stay
FY14	13	28	156	21	0	71	23	0	81
FY15	15	16	107	23	0	99	22	0	90
FY16	19	32	128	12	0	137	16	2	109
FY17	17	16	143	8	1	73	9	7	70
FY18 YTD	18	21	94	4	0	17	10	8	73

## Children's Mental Health - North



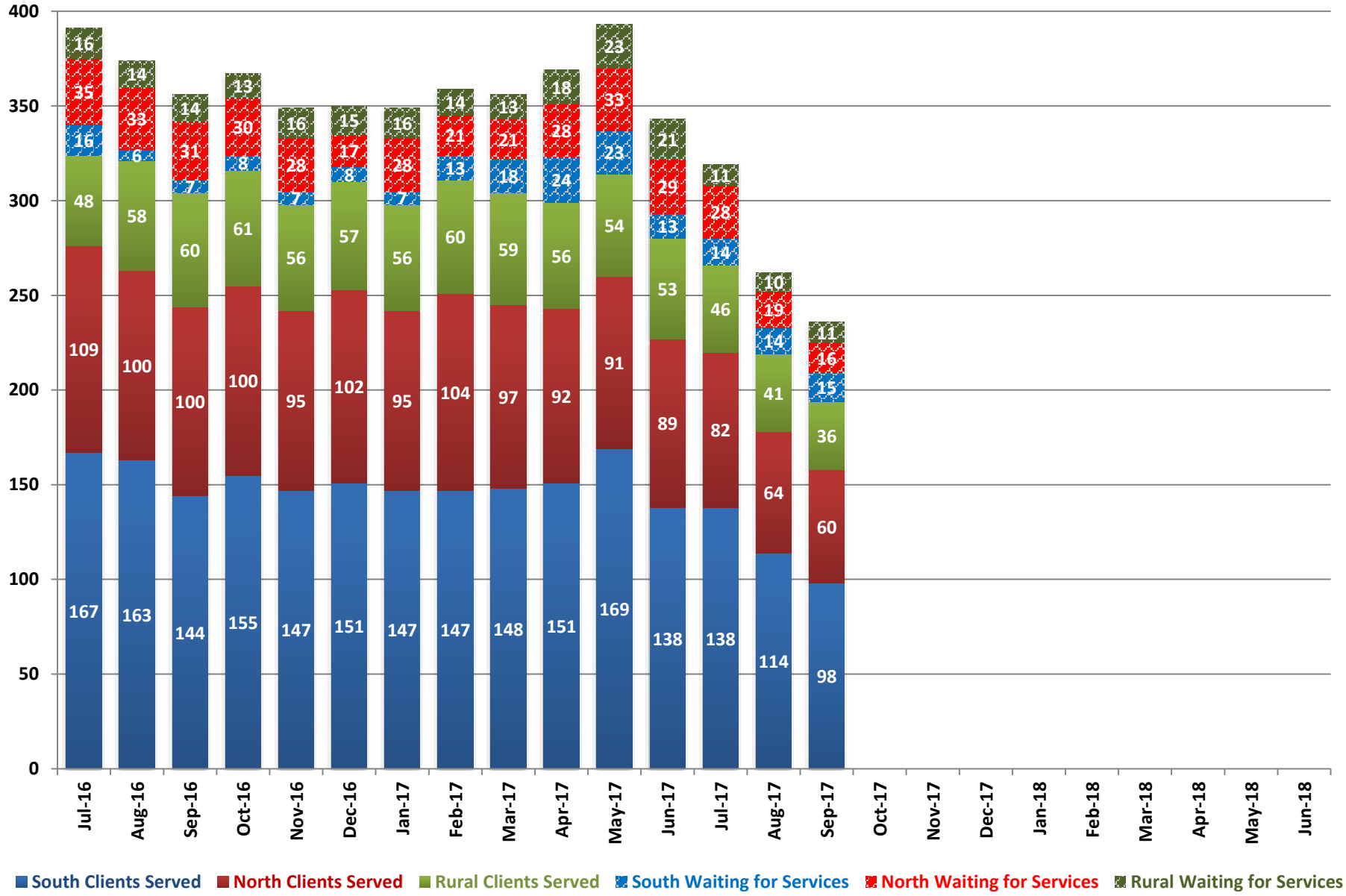
### Children's Mental Health - North

	Adolescent Treatment Center			Family Learning Homes		
	Clients Served	Clients on Wait List	Average Length of Stay	Clients Served	Clients on Wait List	Average Length of Stay
Jul-16	13	11	106	15	18	125
Aug-16	15	9	87	20	13	93
Sep-16	15	15	84	20	11	62
Oct-16	16	15	89	18	12	66
Nov-16	15	15	78	18	14	74
Dec-16	14	15	61	19	17	93
Jan-17	14	15	53	16	17	112
Feb-17	15	14	62	15	12	96
Mar-17	16	11	58	15	10	56
Apr-17	13	10	60	17	6	74
May-17	11	10	53	20	9	92
Jun-17	13	18	67	17	9	96
Jul-17	12	10	55	14	8	88
Aug-17	13	11	65	17	4	77
Sep-17	13	13	90	16	3	73
Oct-17						
Nov-17						
Dec-17						
Jan-18						
Feb-18						
Mar-18						
Apr-18						
May-18						
Jun-18						

#### ***Fiscal Year Averages***

Fiscal Year	Adolescent Treatment Center			Family Learning Homes		
	Clients Served	Clients on Wait List	Average Length of Stay	Clients Served	Clients on Wait List	Average Length of Stay
FY14	15	21	87	18	14	95
FY15	15	14	93	16	14	87
FY16	14	14	93	19	19	103
FY17	14	13	72	18	12	87
FY18 YTD	13	11	70	16	5	79

## Children's Wraparound in Nevada (WIN)



**Children's Wraparound in Nevada (WIN)**

	<b>South Clients Served</b>	<b>South Waiting for Services</b>	<b>North Clients Served</b>	<b>North Waiting for Services</b>	<b>Rural Clients Served</b>	<b>Rural Waiting for Services</b>	<b>Total Served</b>	<b>Total Waiting for Services</b>
Jul-16	167	16	109	35	48	16	324	67
Aug-16	163	6	100	33	58	14	321	53
Sep-16	144	7	100	31	60	14	304	52
Oct-16	155	8	100	30	61	13	316	51
Nov-16	147	7	95	28	56	16	298	51
Dec-16	151	8	102	17	57	15	310	40
Jan-17	147	7	95	28	56	16	298	51
Feb-17	147	13	104	21	60	14	311	48
Mar-17	148	18	97	21	59	13	304	52
Apr-17	151	24	92	28	56	18	299	70
May-17	169	23	91	33	54	23	314	79
Jun-17	138	13	89	29	53	21	280	63
Jul-17	138	14	82	28	46	11	266	53
Aug-17	114	14	64	19	41	10	219	43
Sep-17	98	15	60	16	36	11	194	42
Oct-17								
Nov-17								
Dec-17								
Jan-18								
Feb-18								
Mar-18								
Apr-18								
May-18								
Jun-18								

***Fiscal Year Averages***

<b>Fiscal Year</b>	<b>South Clients Served</b>	<b>South Waiting for Services</b>	<b>North Clients Served</b>	<b>North Waiting for Services</b>	<b>Rural Clients Served</b>	<b>Rural Waiting for Services</b>	<b>Total Served</b>	<b>Total Waiting for Services</b>
FY14	170	36	98	15	45	5	312	65
FY15	159	25	92	20	48	7	299	52
FY16	182	20	102	34	53	12	337	65
FY17	152	13	98	28	57	16	307	56
FY18 YTD	117	14	69	21	41	11	226	46